

## SPIN2B polyclonal antibody

Catalog: BS70804

Host: Rabbit

Reactivity: Human, Mouse, Rat

### Background:

SPIN2B (Spindlin Family Member 2B) is a Protein Coding gene. An important paralog of this gene is SPIN3. Involved in the regulation of cell cycle progression, this activity is related to the inhibition of apoptosis following the removal of essential growth factors.

### Product:

Rabbit IgG, 1mg/ml in PBS with 0.02% sodium azide, 50% glycerol, pH7.2

### Molecular Weight:

~ 29 kDa

### Swiss-Prot:

Q9BPZ2

### Purification&Purity:

The antibody was affinity-purified from rabbit antiserum by affinity-chromatography using epitope-specific immunogen and the purity is > 95% (by SDS-PAGE).

### Applications:

WB 1:500 - 1:2000

IHC 1:50 - 1:200

### Storage&Stability:

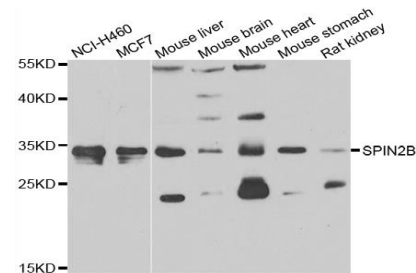
Store at 4 °C short term. Aliquot and store at -20 °C long term. Avoid freeze-thaw cycles.

### Specificity:

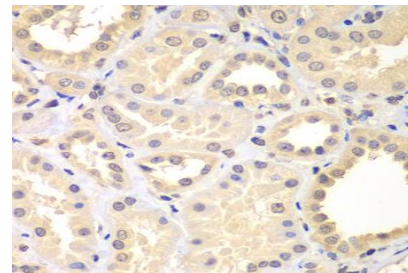
SPIN2B polyclonal antibody detects endogenous levels of

SPIN2B protein.

### DATA:



Western blot analysis of extracts of various cell lines, using SPIN2B antibody.



Immunohistochemistry of paraffin-embedded human kidney using SPIN2B antibody at dilution of 1:100 (x400 lens).

### Note:

For research use only, not for use in diagnostic procedure.

### Bioworld Technology, Inc.

Add: 1660 South Highway 100, Suite 500 St. Louis Park, MN 55416, USA.

Email: [info@bioworld.com](mailto:info@bioworld.com)

Tel: 6123263284

Fax: 6122933841

### Bioworld technology, co. Ltd.

Add: No 9, weidi road Qixia District Nanjing, 210046, P. R. China.

Email: [info@biogot.com](mailto:info@biogot.com)

Tel: 0086-025-68037686

Fax: 0086-025-68035151