

ABCF2 polyclonal antibody

Catalog: BS70619

Host: Rabbit

Reactivity: Human, Mouse, Rat

BackGround:

This gene encodes a member of the ATP-binding cassette (ABC) transporter superfamily. ATP-binding cassette proteins transport various molecules across extra- and intra-cellular membranes. Alterations in this gene may be involved in cancer progression. Alternative splicing results in multiple transcript variants. Related pseudogenes have been identified on chromosomes 3 and 7.

Product:

Rabbit IgG, 1mg/ml in PBS with 0.02% sodium azide, 50% glycerol, pH7.2

Molecular Weight:

~ 71 kDa

Swiss-Prot:

Q9UG63

Purification&Purity:

The antibody was affinity-purified from rabbit antiserum by affinity-chromatography using epitope-specific immunogen and the purity is > 95% (by SDS-PAGE).

Applications:

WB 1:500 - 1:2000

IHC 1:50 - 1:200

IF 1:50 - 1:200

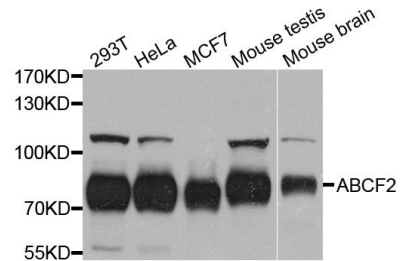
Storage&Stability:

Store at 4 °C short term. Aliquot and store at -20 °C long term. Avoid freeze-thaw cycles.

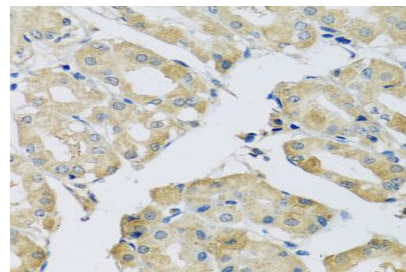
Specificity:

ABCF2 polyclonal antibody detects endogenous levels of ABCF2 protein.

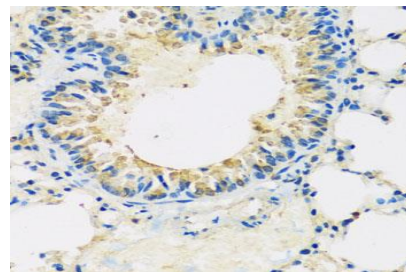
DATA:



Western blot analysis of extract of various cells, using ABCF2 antibody.



Immunohistochemistry of paraffin-embedded mouse lung using ABCF2 antibody at dilution of 1:100 (x40 lens).



Immunohistochemistry of paraffin-embedded human stomach using ABCF2 antibody at dilution of 1:100 (x40 lens).

Note:

For research use only, not for use in diagnostic procedure.

Bioworld Technology, Inc.

Add: 1660 South Highway 100, Suite 500 St. Louis Park, MN 55416, USA.

Email: info@bioworld.com

Tel: 6123263284

Fax: 6122933841

Bioworld technology, co. Ltd.

Add: No 9, weidi road Qixia District Nanjing, 210046, P. R. China.

Email: info@biogot.com

Tel: 0086-025-68037686

Fax: 0086-025-68035151