

## Cleaved-MMP-14 (Y112) polyclonal antibody

Catalog: BS7040

Host: Rabbit

Reactivity: Human, Mouse, Rat

### BackGround:

The matrix metalloproteinases (MMP) are a family of peptidase enzymes responsible for the degradation of extracellular matrix components, including collagen, gelatin, fibronectin, laminin and proteoglycan. Transcription of MMP genes is differentially activated by phorbol ester, lipopolysaccharide (LPS) or staphylococcal enterotoxin B (SEB). MMP catalysis requires both calcium and zinc. Membrane-type matrix metalloproteinases, including MT-MMP-1 (also designated MMP-14), MT-MMP-2 (also designated MMP-15), MT-MMP-3 (also designated MMP-16) and MT-MMP-4 (also designated MMP-17) are type I membrane proteins that function to activate other MMPs. MT-MMP activation appears to be mediated by members of the proprotein convertase family, suggesting that a proprotein convertase/MT-MMP/MMP cascade may be involved in the regulation of ECM turnover.

### Product:

Rabbit IgG, 1mg/ml in PBS with 0.02% sodium azide, 50% glycerol, pH7.2

### Molecular Weight:

~ 53, 65 kDa

### Swiss-Prot:

P50281

### Purification&Purity:

The antibody was affinity-purified from rabbit antiserum by affinity-chromatography using epitope-specific immunogen and the purity is > 95% (by SDS-PAGE).

### Applications:

WB: 1:500~1:1000

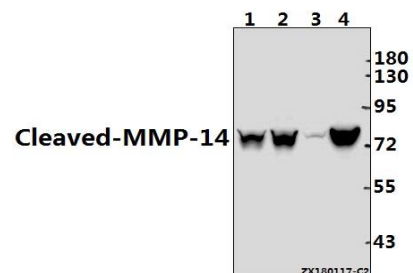
### Storage&Stability:

Store at 4 °C short term. Aliquot and store at -20 °C long term. Avoid freeze-thaw cycles.

### Specificity:

Cleaved-MMP-14 (Y112) polyclonal antibody detects endogenous levels of Pro-MMP-14 (65 kDa) or Cleaved-MMP-14 (53 kDa) protein.

### DATA:



Western blot (WB) analysis of Cleaved-MMP-14 (Y112) pAb at 1:500 dilution

Lane1:HCT116 whole cell lysate(40ug)

Lane2:MCF-7 whole cell lysate(40ug)

Lane3:The Uterus tissue lysate of Rat(40ug)

Lane4:The Testis tissue lysate of Mouse(40ug)

### Note:

For research use only, not for use in diagnostic procedure.

### Bioworld Technology, Inc.

Add: 1660 South Highway 100, Suite 500 St. Louis Park, MN 55416, USA.

Email: [info@bioworld.com](mailto:info@bioworld.com)

Tel: 6123263284

Fax: 6122933841

### Bioworld technology, co. Ltd.

Add: No 9, weidi road Qixia District Nanjing, 210046, P. R. China.

Email: [info@biogot.com](mailto:info@biogot.com)

Tel: 0086-025-68037686

Fax: 0086-025-68035151