

Caspase-6 p18 (D162) polyclonal antibody

Catalog: BS7006

Host: Rabbit

Reactivity: Mouse, Rat

BackGround:

Caspase-6 (Mch2) is one of the major executioner caspases functioning in cellular apoptotic processes. Upon apoptotic stimulation, initiator caspases such as caspase-9 are cleaved and activated. The activated upstream caspases further process downstream executioner caspases, such as caspase-3 and caspase-6, by cleaving them into large and small subunits, thereby initiating a caspase cascade leading to apoptosis. One of the major targets for caspase-6 is the membrane associated protein lamin A. The cleavage of this protein causes cell membrane malfunction, membrane blebbing and eventual cell death.

Product:

Rabbit IgG, 1mg/ml in PBS with 0.02% sodium azide, 50% glycerol, pH7.2

Molecular Weight:

~ 18, 35 kDa

Swiss-Prot:

O08738

Purification&Purity:

The antibody was affinity-purified from rabbit antiserum by affinity-chromatography using epitope-specific immunogen and the purity is > 95% (by SDS-PAGE).

Applications:

IHC: 1:50~1:200

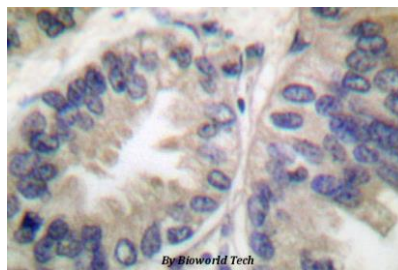
Storage&Stability:

Store at 4 °C short term. Aliquot and store at -20 °C long term. Avoid freeze-thaw cycles.

Specificity:

Caspase-6 p18 (D162) polyclonal antibody detects endogenous levels of the large subunit of active caspase-6 resulting from cleavage at Asp162 in mouse and rat (18 kDa). This antibody does not recognize other cleaved caspases.

DATA:



Immunohistochemistry (IHC) analysis of Caspase-6 p18 (D162) pAb in paraffin-embedded human lung carcinoma tissue.

Note:

For research use only, not for use in diagnostic procedure.

Bioworld Technology, Inc.

Add: 1660 South Highway 100, Suite 500 St. Louis Park, MN 55416, USA.

Email: info@bioworld.com

Tel: 6123263284

Fax: 6122933841

Bioworld technology, co. Ltd.

Add: No 9, weidi road Qixia District Nanjing, 210046, P. R. China.

Email: info@biogot.com

Tel: 0086-025-68037686

Fax: 0086-025-68035151