

## IRF3 polyclonal antibody

Catalog: BS6921

Host: Rabbit

Reactivity: Human, Mouse, Rat

### BackGround:

IRF-3 can inhibit cell growth and plays a critical role in controlling the expression of genes in the innate immune response. In unstimulated cells, IRF-3 is present in the cytoplasm. Viral infection results in phosphorylation of IRF-3 and leads to its translocation to the nucleus where it activates promoters containing IRF-3-binding sites.

### Product:

Rabbit IgG, 1mg/ml in PBS with 0.02% sodium azide, 50% glycerol, pH7.2

### Molecular Weight:

~ 54 kDa

### Swiss-Prot:

Q14653

### Purification&Purity:

The antibody was affinity-purified from rabbit antiserum by affinity-chromatography using epitope-specific immunogen and the purity is > 95% (by SDS-PAGE).

### Applications:

WB 1:500 - 1:1000 IHC 1:100 - 1:200 IF1:100 - 1:500

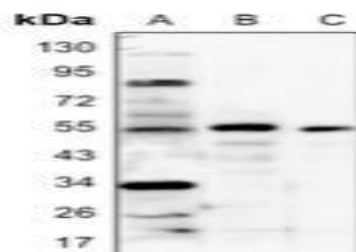
### Storage&Stability:

Store at 4 °C short term. Aliquot and store at -20 °C long term. Avoid freeze-thaw cycles.

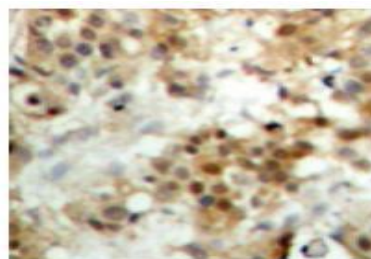
### Specificity:

IRF3 polyclonal antibody detects endogenous levels of IRF3 protein.

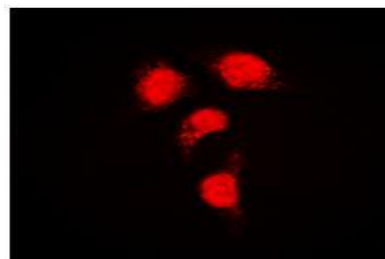
### DATA:



Western blot analysis of IRF3 expression in PC3 (A), mouse brain (B), rat brain (C) whole cell lysates.



Immunohistochemical analysis of IRF3 staining in human breast cancer formalin fixed paraffin embedded tissue section.



Immunofluorescent analysis of IRF3 staining in HeLa cells.

### Note:

For research use only, not for use in diagnostic procedure.

### Bioworld Technology, Inc.

Add: 1660 South Highway 100, Suite 500 St. Louis Park, MN 55416, USA.

Email: [info@bioworld.com](mailto:info@bioworld.com)

Tel: 6123263284

Fax: 6122933841

### Bioworld technology, co. Ltd.

Add: No 9, weidi road Qixia District Nanjing, 210046, P. R. China.

Email: [info@biogot.com](mailto:info@biogot.com)

Tel: 0086-025-68037686

Fax: 0086-025-68035151