

PR polyclonal antibody

Catalog: BS6898

Host: Rabbit

Reactivity: Human, Mouse, Rat

Background:

The effects of progesterone are mediated by two functionally different isoforms of the progesterone receptor, PR-A and PR-B, which are transcribed from distinct, estrogen inducible promoters within a single copy of the PR gene. The PR-A and PR-B proteins are 90 kDa and 118 kDa respectively; the first 164 amino acids of PR-B are absent in PR-A. Progesterone bound PR-A and PR-B have different transcription activation properties. Specifically, PR-B functions as a transcriptional activator in most cell and promoter contexts, while PR-A is transcriptionally inactive and functions as a strong ligand dependent transdominant repressor of steroid hormone receptor transcriptional activity. An inhibitory domain (ID), which maps to the amino terminus of the receptor, exists within both PR isoforms.

Product:

Rabbit IgG, 1mg/ml in PBS with 0.02% sodium azide, 50% glycerol, pH7.2

Molecular Weight:

~ 90 kDa (PR-A)

~ 118 kDa (PR-B)

Swiss-Prot:

P06401

Purification&Purity:

The antibody was affinity-purified from rabbit antiserum

by affinity-chromatography using epitope-specific immunogen and the purity is > 95% (by SDS-PAGE).

Applications:

WB: 1:500~1:2000

IHC: 1:50~1:200

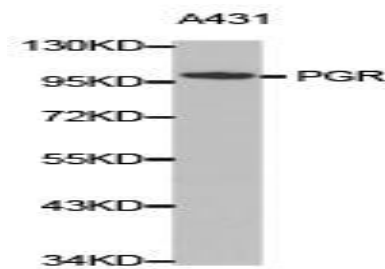
Storage&Stability:

Store at 4 °C short term. Aliquot and store at -20 °C long term. Avoid freeze-thaw cycles.

Specificity:

PGR polyclonal antibody detects endogenous levels of PGR protein.

DATA:



Western blot analysis of extracts of A431 cell lines, using PGR antibody.

Note:

For research use only, not for use in diagnostic procedure.

Bioworld Technology, Inc.

Add: 1660 South Highway 100, Suite 500 St. Louis Park, MN 55416, USA.

Email: info@bioworld.com

Tel: 6123263284

Fax: 6122933841

Bioworld technology, co. Ltd.

Add: No 9, weidi road Qixia District Nanjing, 210046, P. R. China.

Email: info@biogot.com

Tel: 0086-025-68037686

Fax: 0086-025-68035151