

SGK1 (Phospho-T256) polyclonal antibody

Catalog: BS67593

Host: Rabbit

Reactivity: Human, Mouse, Rat

BackGround:

Serum and glucocorticoid-inducible kinase (SGK) is a serine/threonine kinase closely related to Akt . SGK is rapidly induced in response to a variety of stimuli, including serum, glucocorticoid, follicle stimulating hormone, osmotic shock, and mineralocorticoids. SGK activation can be accomplished via HGF PI3K-dependent pathways and by integrin-mediated PI3K-independent pathways . Induction and activation of SGK has been implicated in activating the modulation of anti-apoptotic and cell cycle regulation . SGK also plays an important role in activating certain potassium, sodium, and chloride channels, suggesting its involvement in the regulation of processes such as cell survival, neuronal excitability, and renal sodium excretion . SGK is negatively regulated by ubiquitination and proteasome degradation .

Product:

Liquid in 0.42% Potassium phosphate, 0.87% Sodium chloride, pH 7.3, 30% glycerol, and 0.01% sodium azide.

Molecular Weight:

~ 45 kDa

Swiss-Prot:

O00141

Purification&Purity:

The antibody was purified by immunogen affinity chromatography.

Applications:

WB (1/500 - 1/1000)

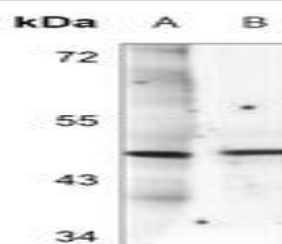
Storage&Stability:

Store at 4 °C short term. Aliquot and store at -20 °C long term. Avoid freeze-thaw cycles.

Specificity:

Recognizes endogenous levels of SGK1 with a phosphorylation site at T256 protein.

DATA:



Western blot analysis of SGK1 (pT256) expression in rat liver (A), mouse brain (B) whole cell lysates.

Note:

For research use only, not for use in diagnostic procedure.

Bioworld Technology, Inc.

Add: 1660 South Highway 100, Suite 500 St. Louis Park, MN 55416, USA.

Email: info@bioworld.com

Tel: 6123263284

Fax: 6122933841

Bioworld technology, co. Ltd.

Add: No 9, weidi road Qixia District Nanjing, 210046, P. R. China.

Email: info@biogot.com

Tel: 0086-025-68037686

Fax: 0086-025-68035151