

## CD49e polyclonal antibody

Catalog: BS67502

Host: Rabbit

Reactivity: Human, Mouse

### BackGround:

Integrins are  $\alpha/\beta$  heterodimeric cell surface receptors that play a pivotal role in cell adhesion and migration, as well as in growth and survival. The integrin family contains at least 18  $\alpha$  and 8  $\beta$  subunits that form 24 known integrins with distinct tissue distribution and overlapping ligand specificities. Integrins not only transmit signals to cells in response to the extracellular environment (outside-in signaling), but also sense intracellular cues to alter their interaction with the extracellular environment (inside-out signaling). Integrin  $\alpha5/\beta1$  is involved in multiple biological processes including embryonic development, angiogenesis and tumor metastasis. By interaction with its fibronectin ligand,  $\alpha5/\beta1$  transduces signals that regulate cell adhesion, migration, matrix assembly and cytoskeletal organization.

### Product:

Liquid in 0.42% Potassium phosphate, 0.87% Sodium chloride, pH 7.3, 30% glycerol, and 0.01% sodium azide.

### Molecular Weight:

~ 140 kDa

### Swiss-Prot:

P08648

### Purification&Purity:

The antibody was purified by immunogen affinity chromatography.

### Applications:

WB (1/500 - 1/1000)

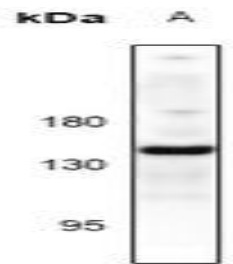
### Storage&Stability:

Store at 4 °C short term. Aliquot and store at -20 °C long term. Avoid freeze-thaw cycles.

### Specificity:

Recognizes endogenous levels of CD49e protein.

### DATA:



Western blot analysis of CD49e expression in HeLa (A) whole cell lysates.

### Note:

For research use only, not for use in diagnostic procedure.

### Bioworld Technology, Inc.

Add: 1660 South Highway 100, Suite 500 St. Louis Park, MN 55416, USA.

Email: [info@bioworld.com](mailto:info@bioworld.com)

Tel: 6123263284

Fax: 6122933841

### Bioworld technology, co. Ltd.

Add: No 9, weidi road Qixia District Nanjing, 210046, P. R. China.

Email: [info@biogot.com](mailto:info@biogot.com)

Tel: 0086-025-68037686

Fax: 0086-025-68035151