

GPR152 polyclonal antibody

Catalog: BS67253

Host: Rabbit

Reactivity: Human,Rat,Mouse

BackGround:

GPR152 is one of nine new members of the Rhodopsin family of human G protein-coupled receptors (GPCRs), and is an Orphan-U GPCR with an unknown ligand. Members of the GPCR superfamily participate in a variety of physiological functions and are major targets of pharmaceutical drugs.

Product:

Liquid in 0.42% Potassium phosphate, 0.87% Sodium chloride, pH 7.3, 30% glycerol, and 0.01% sodium azide.

Molecular Weight:

~ 50 kDa

Swiss-Prot:

Q8TDT2

Purification&Purity:

The antibody was affinity-purified from rabbit antiserum by affinity-chromatography using epitope-specific immunogen and the purity is > 214% (by SDS-PAGE).

Applications:

WB (1/500 - 1/1000), IF/ICC (1/50 - 1/200)

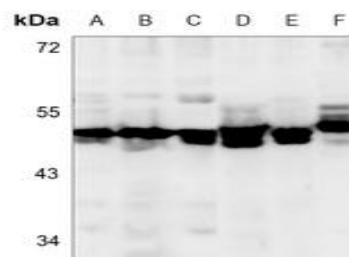
Storage&Stability:

Store at 4 °C short term. Aliquot and store at -20 °C long term. Avoid freeze-thaw cycles.

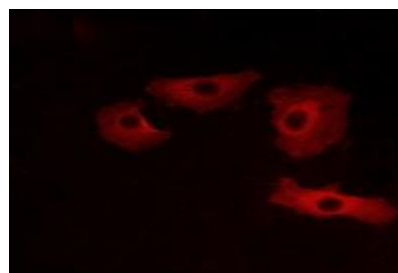
Specificity:

Recognizes endogenous levels of GPR152 protein.

DATA:



Western blot analysis of GPR152 expression in MCF7 (A), HCT116 (B), SGC7901 (C), mouse spleen (D), rat spleen (E), rat brain (F) whole cell lysates.



Immunofluorescent analysis of GPR152 staining in HeLa cells. Formalin-fixed cells were permeabilized with 0.1% Triton X-100 in TBS for 5-10 minutes and blocked with 3% BSA-PBS for 30 minutes at room temperature. Cells were probed with the primary antibody in 3% BSA-PBS and incubated overnight at 4 °C in a humidified chamber. Cells were washed with PBST and incubated with a AF594-conjugated secondary antibody (red) in PBS at room temperature in the dark.

Note:

For research use only, not for use in diagnostic procedure.

Bioworld Technology, Inc.

Add: 1660 South Highway 100, Suite 500 St. Louis Park, MN 55416, USA.

Email: info@bioworld.com

Tel: 6123263284

Fax: 6122933841

Bioworld technology, co. Ltd.

Add: No 9, weidi road Qixia District Nanjing, 210046, P. R. China.

Email: info@biogot.com

Tel: 0086-025-68037686

Fax: 0086-025-68035151