

Integrin alpha 6 Polyclonal Antibody

Catalog: BS65611

Host: Rabbit

Reactivity: Human, (predicted:
Mouse, Rat, Chicken, Cow,)

BackGround:

Integrins are important extracellular matrix (ECM) receptor proteins located on cell surfaces. They are heterodimers composed of an alpha and a beta transmembrane glycoprotein subunit. Around twenty two different integrins (different alpha/ beta subunit combinations) are found in nature. Integrins are generally present in high concentrations at the cell surface, but, unlike most other cell surface receptors, they bind ligands with very low affinity. Due to their weak individual binding, integrins need to cluster and bind in groups in order to effectively bind the ECM. Integrins bind many different ligands including laminin. Each integrin is made up of a large N terminal extracellular domain that binds the ECM ligand and a small C terminal cytoplasmic domain that mediates interaction with the actin cytoskeleton and signaling function. Integrin alpha 6 complexes are receptors for laminins, which are components of basement membranes. Integrin alpha 6 complexes may play an important role in embryogenesis.

Product:

0.01M TBS(pH7.4) with 1% BSA, 0.03% Proclin300 and 50% Glycerol.

Molecular Weight:

115 kD

Swiss-Prot:

P23229

Purification&Purity:

affinity purified by Protein A

Applications:

WB=1:500-2000

Storage&Stability:

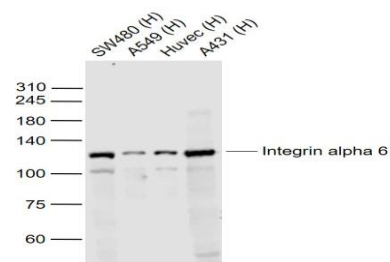
Store at 4 °C short term. Aliquot and store at -20 °C long

term. Avoid freeze-thaw cycles.

Specificity:

Integrin alpha 6 Polyclonal Antibody detects endogenous levels of Integrin alpha 6 protein.

DATA:



Sample:

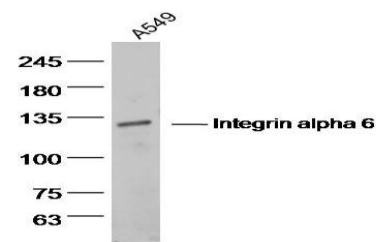
Lane 1: SW480 (Human) Cell Lysate at 30 ug

Lane 2: A549 (Human) Cell Lysate at 30 ug

Lane 3: Huvec (Human) Cell Lysate at 30 ug

Lane 4: A431 (Human) Cell Lysate at 30 ug

Primary: Anti-Integrin alpha 6 at 1/1000 dilution



Sample: A549 Cell (Human) Lysate at 40 ug

Primary: Anti-Integrin alpha 6 at 1/300 dilution

Note:

For research use only, not for use in diagnostic procedure.

Bioworld Technology, Inc.

Add: 1660 South Highway 100, Suite 500 St. Louis Park,
MN 55416, USA.

Email: info@bioworld.com

Tel: 6123263284

Fax: 6122933841

Bioworld technology, co. Ltd.

Add: No 9, weidi road Qixia District Nanjing, 210046,
P. R. China.

Email: info@biogot.com

Tel: 0086-025-68037686

Fax: 0086-025-68035151