

## IL-13Ra2 polyclonal antibody

Catalog: BS65556

Host: Rabbit

Reactivity: Human

### BackGround:

This protein is closely related to IL13RA1, a subunit of the interleukin 13 receptor complex. This protein binds IL13 with high affinity, but lacks cytoplasmic domain, and does not appear to function as a signal mediator. It is reported to play a role in the internalization of IL13.

### Product:

0.01M TBS(pH7.4) with 1% BSA, 0.03% Proclin300 and 50% Glycerol.

### Molecular Weight:

~41kDa

### Swiss-Prot:

O88786

### Purification&Purity:

affinity purified by Protein A

### Applications:

IHC-P=1:100-500 (石蜡切片需做抗原修复)

not yet tested in other applications.

optimal dilutions/concentrations should be determined by the end user.

### Storage&Stability:

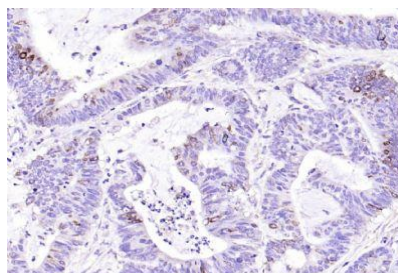
Store at 4 °C short term. Aliquot and store at -20 °C long

term. Avoid freeze-thaw cycles.

### Specificity:

IL-13Ra2 polyclonal Antibody detects endogenous levels of IL-13Ra2 protein.

### DATA:



Paraformaldehyde-fixed, paraffin embedded (human colon carcinoma); Antigen retrieval by boiling in sodium citrate buffer (pH6.0) for 15min; Block endogenous peroxidase by 3% hydrogen peroxide for 20 minutes; Blocking buffer (normal goat serum) at 37 °C for 30min; Antibody incubation with (IL-13Ra2) Polyclonal Antibody, Unconjugated at 1:200 overnight at 4 °C.

### Note:

For research use only, not for use in diagnostic procedure.

### Bioworld Technology, Inc.

Add: 1660 South Highway 100, Suite 500 St. Louis Park, MN 55416, USA.

Email: [info@bioworld.com](mailto:info@bioworld.com)

Tel: 6123263284

Fax: 6122933841

### Bioworld technology, co. Ltd.

Add: No 9, weidi road Qixia District Nanjing, 210046, P. R. China.

Email: [info@biogot.com](mailto:info@biogot.com)

Tel: 0086-025-68037686

Fax: 0086-025-68035151