

Haspin polyclonal antibody

Catalog: BS65541

Host: Rabbit

Reactivity: Mouse, Rat

BackGround:

Haspins is a protein family containing a distinctive C-terminal kinase domain and a divergent N-terminus. Haspin homologues occur within a diverse group of eukaryotes, including animals, plants and fungi, which suggests an early evolutionary origin. Haspin, a nuclear protein strongly expressed in male germ cells, is responsible for the phosphorylation of histone H3 at Thr-3. Depletion of Haspin RNA prevents normal alignment of chromosomes at metaphase, suggesting a crucial role for haspin during chromosome segregation. Expression of haspin also occurs in adult thymus and bone marrow, with weaker expression in adult prostate, intestine, lung, spleen, and lymph node. The gene encoding human haspin maps to chromosome 17p13.

Product:

0.01M TBS(pH7.4) with 1% BSA, 0.03% Proclin300 and 50% Glycerol.

Molecular Weight:

~90kDa

Swiss-Prot:

Q9Z0R0

Purification&Purity:

affinity purified by Protein A

Applications:

WB=1:500-2000

not yet tested in other applications.

optimal dilutions/concentrations should be determined by the end user.

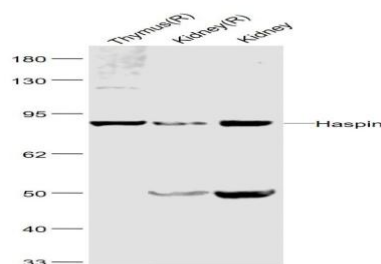
Storage&Stability:

Store at 4 °C short term. Aliquot and store at -20 °C long term. Avoid freeze-thaw cycles.

Specificity:

Haspin polyclonal Antibody detects endogenous levels of Haspin protein.

DATA:



Anti-Haspin at 1/1000 dilution

Note:

For research use only, not for use in diagnostic procedure.

Bioworld Technology, Inc.

Add: 1660 South Highway 100, Suite 500 St. Louis Park, MN 55416, USA.

Email: info@bioworld.com

Tel: 6123263284

Fax: 6122933841

Bioworld technology, co. Ltd.

Add: No 9, weidi road Qixia District Nanjing, 210046, P. R. China.

Email: info@biogot.com

Tel: 0086-025-68037686

Fax: 0086-025-68035151