

## GLUT3 polyclonal antibody

Catalog: BS65539

Host: Rabbit

Reactivity: Human, Mouse

### BackGround:

may act as a glucose transporter in neurons; may mediate increased glucose uptake in response to neuronal injury. Glucose is fundamental to the metabolism of mammalian cells. Several glucose transporter protein (Glut) isoforms have been identified and shown to function in response to insulin and IGF1 induced signaling. GLUT3 is detectable in a few normal cell type spermatids in testis with active spermatogenesis, placental trophoblast membranes, and neurons in brain. GLUT3 staining is also detectable in human cancers including those of the ovary, lung, and testis. Alternative names: FLJ90380; Glucose Transporter Type 3; Glucose transporter type 3 brain; GLUT 3; GLUT3; SLC2A3; Solute Carrier Family 2 (Facilitated Glucose Transporter) Member 3.

### Product:

0.01M TBS(pH7.4) with 1% BSA, 0.03% Proclin300 and 50% Glycerol.

### Molecular Weight:

~60kDa

### Swiss-Prot:

P11169

### Purification&Purity:

affinity purified by Protein A

### Applications:

WB=1:500-2000

not yet tested in other applications.

optimal dilutions/concentrations should be determined by the end user.

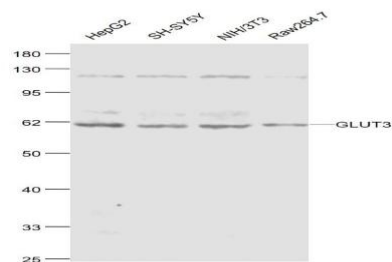
### Storage&Stability:

Store at 4 °C short term. Aliquot and store at -20 °C long term. Avoid freeze-thaw cycles.

### Specificity:

GLUT3 polyclonal Antibody detects endogenous levels of GLUT3 protein.

### DATA:



Anti-GLUT3 at 1/1000 dilution

### Note:

For research use only, not for use in diagnostic procedure.

### Bioworld Technology, Inc.

Add: 1660 South Highway 100, Suite 500 St. Louis Park, MN 55416, USA.

Email: [info@bioworld.com](mailto:info@bioworld.com)

Tel: 6123263284

Fax: 6122933841

### Bioworld technology, co. Ltd.

Add: No 9, weidi road Qixia District Nanjing, 210046, P. R. China.

Email: [info@biogot.com](mailto:info@biogot.com)

Tel: 0086-025-68037686

Fax: 0086-025-68035151