

## GASC1/KDM4C polyclonal antibody

Catalog: BS65536

Host: Rabbit

Reactivity: Human

### BackGround:

KDM4C/JMJD2C, a jumonji domain containing protein, is a histone demethylase. JMJD2C specifically demethylates Lysine 9 and Lysine 36 residues of Histone H3, thereby playing a central role in regulating histone modifications.

### Product:

0.01M TBS(pH7.4) with 1% BSA, 0.03% Proclin300 and 50% Glycerol.

### Molecular Weight:

~120kDa

### Swiss-Prot:

Q9H3R0

### Purification&Purity:

affinity purified by Protein A

### Applications:

WB=1:500-2000

not yet tested in other applications.

optimal dilutions/concentrations should be determined by the end user.

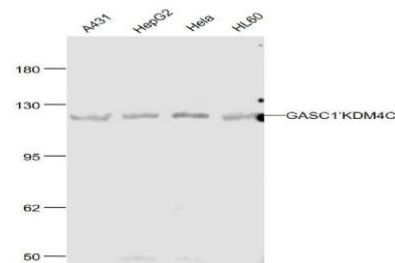
### Storage&Stability:

Store at 4 °C short term. Aliquot and store at -20 °C long term. Avoid freeze-thaw cycles.

### Specificity:

GASC1/KDM4C polyclonal Antibody detects endogenous levels of GASC1/KDM4C protein.

### DATA:



Anti- GASC1/KDM4C at 1/1000 dilution

### Note:

For research use only, not for use in diagnostic procedure.

### Bioworld Technology, Inc.

Add: 1660 South Highway 100, Suite 500 St. Louis Park, MN 55416, USA.

Email: [info@bioworld.com](mailto:info@bioworld.com)

Tel: 6123263284

Fax: 6122933841

### Bioworld technology, co. Ltd.

Add: No 9, weidi road Qixia District Nanjing, 210046, P. R. China.

Email: [info@biogot.com](mailto:info@biogot.com)

Tel: 0086-025-68037686

Fax: 0086-025-68035151