

PD-L1 polyclonal antibody

Catalog: BS65532

Host: Rabbit

Reactivity: Mouse, Rat,

BackGround:

Programmed cell death 1 ligand 1 (Programmed death ligand 1; PD-L1; PDCD1 ligand 1; B7 homolog 1; B7-H1; CD274) involved in the costimulatory signal, essential for T lymphocyte proliferation and production of IL10 and IFNG, in an IL2-dependent and a PDCD1-independent manner. Interaction with PDCD1 inhibits T-cell proliferation and cytokine production.

Product:

0.01M TBS (pH 7.4) with 1% BSA, 0.03% Proclin300 and 50% Glycerol.

Molecular Weight:

~50kDa

Swiss-Prot:

Q9EP73

Purification&Purity:

affinity purified by Protein A

Applications:

WB=1:500-2000

not yet tested in other applications.

optimal dilutions/concentrations should be determined by

the end user.

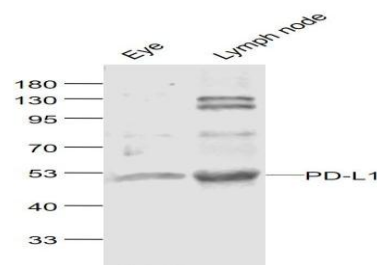
Storage&Stability:

Store at 4 °C short term. Aliquot and store at -20 °C long term. Avoid freeze-thaw cycles.

Specificity:

PD-L1 polyclonal Antibody detects endogenous levels of PD-L1 protein.

DATA:



Anti-PD-L1 at 1/1000 dilution

Note:

For research use only, not for use in diagnostic procedure.

Bioworld Technology, Inc.

Add: 1660 South Highway 100, Suite 500 St. Louis Park, MN 55416, USA.

Email: info@bioworld.com

Tel: 6123263284

Fax: 6122933841

Bioworld technology, co. Ltd.

Add: No 9, weidi road Qixia District Nanjing, 210046, P. R. China.

Email: info@biogot.com

Tel: 0086-025-68037686

Fax: 0086-025-68035151