

## LBX1 polyclonal antibody

Catalog: BS65531      Host: Rabbit      Reactivity: Hu-man, Mouse, Rat, Chicken, Dog, Pig, Cow, Horse, Rabbit,

### BackGround:

The human homolog of the Drosophila lady bird late gene, LBX1, is specifically expressed in the developing central nervous system and musculoskeletal system. The LBX1 gene has a restrictive expression pattern in the dorsal portion of the mantle of the spinal cord and the hindbrain of the CNS. In the developing mouse and chicken musculoskeletal system, Lbx1 is expressed in migrating limb muscle precursor cells. In addition, Lbx1 may regulate migratory patterns of limb muscle cell precursors and may be essential to dorsal identification of forelimb muscles.

### Product:

0.01M TBS(pH7.4) with 1% BSA, 0.03% Proclin300 and 50% Glycerol.

### Molecular Weight:

~30kDa

### Swiss-Prot:

P52954

### Purification&Purity:

affinity purified by Protein A

### Applications:

WB=1:500-2000

not yet tested in other applications.

optimal dilutions/concentrations should be determined by the end user.

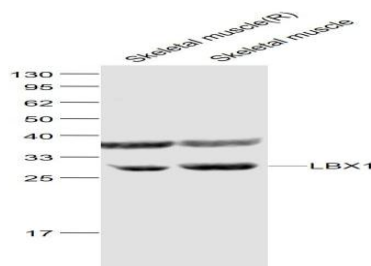
### Storage&Stability:

Store at 4 °C short term. Aliquot and store at -20 °C long term. Avoid freeze-thaw cycles.

### Specificity:

LBX1 polyclonal Antibody detects endogenous levels of LBX1 protein.

### DATA:



Anti- LBX1 at 1/1000 dilution

### Note:

For research use only, not for use in diagnostic procedure.

### Bioworld Technology, Inc.

Add: 1660 South Highway 100, Suite 500 St. Louis Park, MN 55416, USA.

Email: [info@bioworld.com](mailto:info@bioworld.com)

Tel: 6123263284

Fax: 6122933841

### Bioworld technology, co. Ltd.

Add: No 9, weidi road Qixia District Nanjing, 210046, P. R. China.

Email: [info@biogot.com](mailto:info@biogot.com)

Tel: 0086-025-68037686

Fax: 0086-025-68035151