

CBARA1/MICU1 monoclonal antibody

Catalog: BS65496M

Host: Mouse

Reactivity: Human, Mouse, Rat,

BackGround:

This gene encodes an essential regulator of mitochondrial Ca²⁺ uptake under basal conditions. The encoded protein interacts with the mitochondrial calcium uniporter, a mitochondrial inner membrane Ca²⁺ channel, and is essential in preventing mitochondrial Ca²⁺ overload, which can cause excessive production of reactive oxygen species and cell stress. Alternatively spliced transcript variants encoding different isoforms have been described.

Product:

0.01M TBS(pH7.4) with 1% BSA, 0.03% Proclin300 and 50% Glycerol.

Molecular Weight:

54/46 kD

Swiss-Prot:

Q9BPX6

Purification&Purity:

affinity purified by Protein G

Applications:

WB=1:500-1000

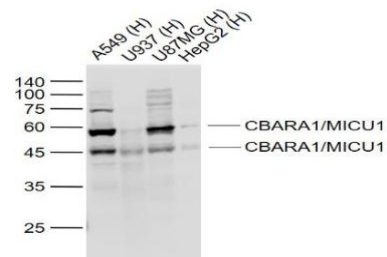
Storage&Stability:

Store at 4 °C short term. Aliquot and store at -20 °C long term. Avoid freeze-thaw cycles.

Specificity:

CBARA1/MICU1 Monoclonal Antibody detects endogenous levels of CBARA1/MICU1 protein.

DATA:



Primary: Anti- CBARA1/MICU1 at 1/1000 dilution

Note:

For research use only, not for use in diagnostic procedure.

Bioworld Technology, Inc.

Add: 1660 South Highway 100, Suite 500 St. Louis Park, MN 55416, USA.

Email: info@bioworld.com

Tel: 6123263284

Fax: 6122933841

Bioworld technology, co. Ltd.

Add: No 9, weidi road Qixia District Nanjing, 210046, P. R. China.

Email: info@biogot.com

Tel: 0086-025-68037686

Fax: 0086-025-68035151