

## TMEM208 Polyclonal Antibody

Catalog: BS65466

Host: Rabbit

Reactivity: Human, Mouse,

**BackGround:****Product:**

0.01M TBS(pH7.4) with 1% BSA, 0.03% Proclin300 and 50% Glycerol.

**Molecular Weight:**

17 kD

**Swiss-Prot:**

Q9BTX3

**Purification&Purity:**

affinity purified by Protein A

**Applications:**

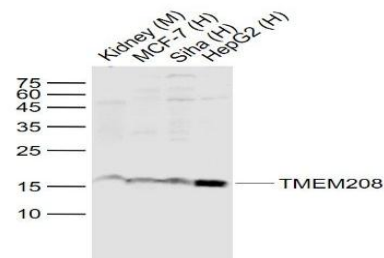
WB=1:500-2000

**Storage&Stability:**

Store at 4 °C short term. Aliquot and store at -20 °C long term. Avoid freeze-thaw cycles.

**Specificity:**

TMEM208 Polyclonal Antibody detects endogenous levels of TMEM208 protein.

**DATA:**

Primary: Anti-TMEM208 at 1/1000 dilution

**Note:**

For research use only, not for use in diagnostic procedure.

**Bioworld Technology, Inc.**

Add: 1660 South Highway 100, Suite 500 St. Louis Park, MN 55416, USA.

Email: [info@bioworld.com](mailto:info@bioworld.com)

Tel: 6123263284

Fax: 6122933841

**Bioworld technology, co. Ltd.**

Add: No 9, weidi road Qixia District Nanjing, 210046, P. R. China.

Email: [info@biogot.com](mailto:info@biogot.com)

Tel: 0086-025-68037686

Fax: 0086-025-68035151