

INCA1 Polyclonal Antibody

Catalog: BS65405 Host: Rabbit Reactivity: Hu-
man, Mouse, Rat, Pig, Cow, Horse, Sheep,

BackGround:

Tissue specificity: Detected in testis, and at lower levels in ovary. Detected at very low levels in testis tumors.

Product:

0.01M TBS(pH7.4) with 1% BSA, 0.03% Proclin300 and 50% Glycerol.

Molecular Weight:

27 kD

Swiss-Prot:

Q0VD86

Purification&Purity:

affinity purified by Protein A

Applications:

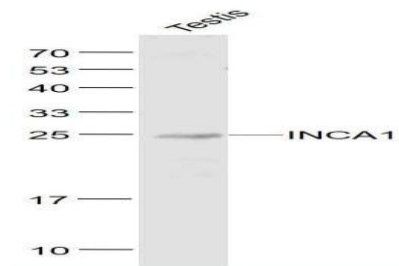
WB=1:500-2000

Storage&Stability:

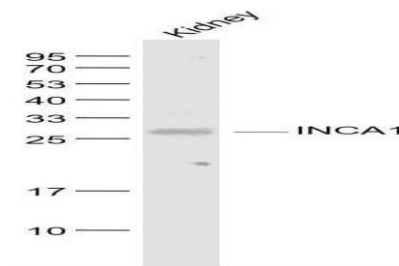
Store at 4 °C short term. Aliquot and store at -20 °C long term. Avoid freeze-thaw cycles.

Specificity:

INCA1 Polyclonal Antibody detects endogenous levels of INCA1 protein.

DATA:

Primary: Anti- INCA1 at 1/1000 dilution



Primary: Anti- INCA1 at 1/1000 dilution

Note:

For research use only, not for use in diagnostic procedure.

Bioworld Technology, Inc.

Add: 1660 South Highway 100, Suite 500 St. Louis Park, MN 55416, USA.

Email: info@bioworld.com

Tel: 6123263284

Fax: 6122933841

Bioworld technology, co. Ltd.

Add: No 9, weidi road Qixia District Nanjing, 210046, P. R. China.

Email: info@biogot.com

Tel: 0086-025-68037686

Fax: 0086-025-68035151