

## PPHLN1 Polyclonal Antibody

Catalog: BS65404      Host: Rabbit      Reactivity: Hu-  
man, Mouse, Rat, Dog, Pig, Cow, Horse, Rabbit,

### Background:

Involved in epithelial differentiation and contributes to epidermal integrity and barrier formation.

### Product:

0.01M TBS (pH 7.4) with 1% BSA, 0.03% Proclin300 and 50% Glycerol.

### Molecular Weight:

53 kD

### Swiss-Prot:

Q8NEY8

### Purification & Purity:

affinity purified by Protein A

### Applications:

WB=1:500-2000 IHC-P=1:100-500

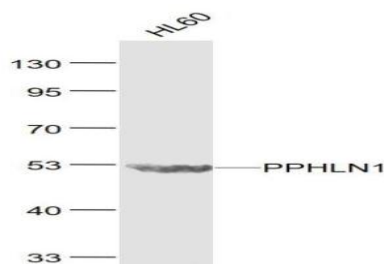
### Storage & Stability:

Store at 4 °C short term. Aliquot and store at -20 °C long term. Avoid freeze-thaw cycles.

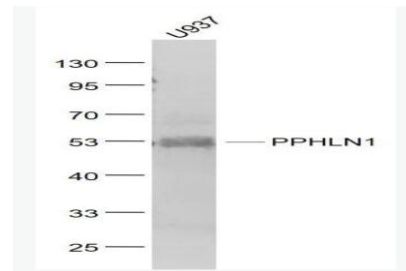
### Specificity:

PPHLN1 Polyclonal Antibody detects endogenous levels of PPHLN1 protein.

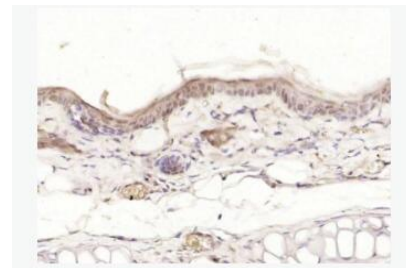
### DATA:



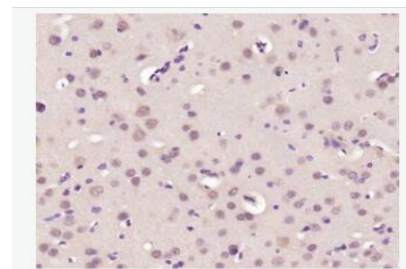
Primary: Anti- PPHLN1 at 1/1000 dilution



Primary: Anti- PPHLN1 at 1/1000 dilution



Paraformaldehyde-fixed, paraffin embedded (rat skin); Antigen retrieval by boiling in sodium citrate buffer (pH 6.0) for 15 min; Block endogenous peroxidase by 3% hydrogen peroxide for 20 minutes; Blocking buffer (normal goat serum) at 37 °C for 30 min; Antibody incubation with (PPHLN1) Polyclonal Antibody, Unconjugated at 1:200 overnight at 4 °C.



Paraformaldehyde-fixed, paraffin embedded (rat brain); Antigen retrieval by boiling in sodium citrate buffer (pH 6.0) for 15 min; Block endogenous peroxidase by 3% hydrogen peroxide for 20 minutes; Blocking buffer (normal goat serum) at 37 °C for 30 min; Antibody incubation with (PPHLN1) Polyclonal Antibody, Unconjugated at 1:200 overnight at 4 °C.

### Note:

### Bioworld Technology, Inc.

Add: 1660 South Highway 100, Suite 500 St. Louis Park, MN 55416, USA.

Email: [info@bioworld.com](mailto:info@bioworld.com)

Tel: 6123263284

Fax: 6122933841

### Bioworld technology, co. Ltd.

Add: No 9, weidi road Qixia District Nanjing, 210046, P. R. China.

Email: [info@biogot.com](mailto:info@biogot.com)

Tel: 0086-025-68037686

Fax: 0086-025-68035151



## PRODUCT DATA SHEET

Bioworld Technology, Inc.

---

For research use only, not for use in diagnostic procedure.

---

### **Bioworld Technology, Inc.**

**Add:** 1660 South Highway 100, Suite 500 St. Louis Park,  
MN 55416, USA.

**Email:** [info@bioworld.com](mailto:info@bioworld.com)

**Tel:** 6123263284

**Fax:** 6122933841

### **Bioworld technology, co. Ltd.**

**Add:** No 9, weidi road Qixia District Nanjing, 210046,  
P. R. China.

**Email:** [info@biogot.com](mailto:info@biogot.com)

**Tel:** 0086-025-68037686

**Fax:** 0086-025-68035151