

MNK1(Ab-250) polyclonal antibody

Catalog: BS65156

Host: Rabbit

Reactivity: Human, Mouse, Rat

BackGround:

MAP kinase interacting serine/threonine kinase 1(MKNK1) Homo sapiens This gene encodes a Ser/Thr protein kinase that interacts with, and is activated by ERK1 and p38 mitogen-activated protein kinases, and thus may play a role in the response to environmental stress and cytokines. This kinase may also regulate transcription by phosphorylating eIF4E via interaction with the C-terminal region of eIF4G. Alternatively spliced transcript variants have been noted for this gene. [provided by RefSeq, Jan 2012],

Product:

Liquid in PBS containing 50% glycerol, 0.5% BSA and 0.02% sodium azide.

Molecular Weight:

/

Swiss-Prot:

Q9BUB5

Purification&Purity:

The antibody was affinity-purified from rabbit antiserum by affinity-chromatography using epitope-specific immunogen.

Applications:

Immunohistochemistry: 1/100 - 1/300. ELISA: 1/20000.

Not yet tested in other applications.

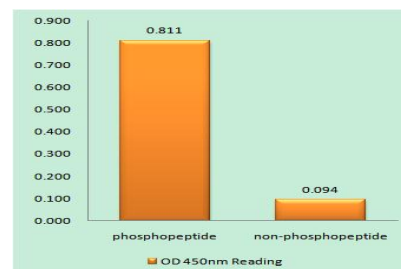
Storage&Stability:

Store at 4 °C short term. Aliquot and store at -20 °C long term. Avoid freeze-thaw cycles.

Specificity:

Phospho-Mnk1 (T250) Polyclonal Antibody detects endogenous levels of Mnk1 protein only when phosphorylated at T250.

DATA:



Enzyme-Linked Immunosorbent Assay (Phospho-ELISA) for Immuno-Gen Phosphopeptide (Phospho-left) and Non-Phosphopeptide (Phospho-right), using MNK1 (Phospho-Thr250) Antibody

Note:

For research use only, not for use in diagnostic procedure.

Bioworld Technology, Inc.

Add: 1660 South Highway 100, Suite 500 St. Louis Park, MN 55416, USA.

Email: info@bioworld.com

Tel: 6123263284

Fax: 6122933841

Bioworld technology, co. Ltd.

Add: No 9, weidi road Qixia District Nanjing, 210046, P. R. China.

Email: info@biogot.com

Tel: 0086-025-68037686

Fax: 0086-025-68035151