

## SLC6A16 polyclonal antibody

Catalog: BS65129

Host: Rabbit

Reactivity: Human

**BackGround:**

solute carrier family 6 member 16(SLC6A16) Homo sapiens SLC6A16 shows structural characteristics of an Na(+)- and Cl(-)-dependent neurotransmitter transporter, including 12 transmembrane (TM) domains, intracellular N and C termini, and large extracellular loops containing multiple N-glycosylation sites.[supplied by OMIM, Mar 2008],

**Product:**

Liquid in PBS containing 50% glycerol, 0.5% BSA and 0.02% sodium azide.

**Molecular Weight:**

/

**Swiss-Prot:**

Q9GZN6

**Purification&Purity:**

The antibody was affinity-purified from rabbit antiserum by affinity-chromatography using epitope-specific immunogen.

**Applications:**

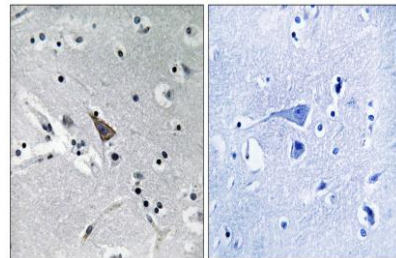
Immunohistochemistry: 1/100 - 1/300. ELISA: 1/40000. Not yet tested in other applications.

**Storage&Stability:**

Store at 4 °C short term. Aliquot and store at -20 °C long term. Avoid freeze-thaw cycles.

**Specificity:**

NTT5 Polyclonal Antibody detects endogenous levels of NTT5 protein.

**DATA:**

Immunohistochemistry analysis of paraffin-embedded human brain, using SLC6A16 Antibody. The picture on the right is blocked with the synthesized peptide.

**Note:**

For research use only, not for use in diagnostic procedure.

**Bioworld Technology, Inc.**

Add: 1660 South Highway 100, Suite 500 St. Louis Park, MN 55416, USA.

Email: [info@bioworld.com](mailto:info@bioworld.com)

Tel: 6123263284

Fax: 6122933841

**Bioworld technology, co. Ltd.**

Add: No 9, weidi road Qixia District Nanjing, 210046, P. R. China.

Email: [info@biogot.com](mailto:info@biogot.com)

Tel: 0086-025-68037686

Fax: 0086-025-68035151