

ARHGDI(Ab-174) polyclonal antibody

Catalog: BS65123

Host: Rabbit

Reactivity: Human, Mouse, Rat

Background:

Rho GDP dissociation inhibitor alpha (ARHGDI) Homo sapiens This gene encodes a protein that plays a key role in the regulation of signaling through Rho GTPases. The encoded protein inhibits the disassociation of Rho family members from GDP (guanine diphosphate), thereby maintaining these factors in an inactive state. Activity of this protein is important in a variety of cellular processes, and expression of this gene may be altered in tumors. Mutations in this gene have been found in individuals with nephrotic syndrome, type 8. Alternate splicing results in multiple transcript variants. [provided by RefSeq, Jul 2014],

Product:

Liquid in PBS containing 50% glycerol, 0.5% BSA and 0.02% sodium azide.

Molecular Weight:

~ 23 kDa

Swiss-Prot:

P52565

Purification&Purity:

The antibody was affinity-purified from rabbit antiserum by affinity-chromatography using epitope-specific immunogen.

Applications:

Western Blot: 1/500 - 1/2000. Immunohistochemistry: 1/100 - 1/300. ELISA: 1/20000. Not yet tested in other applications.

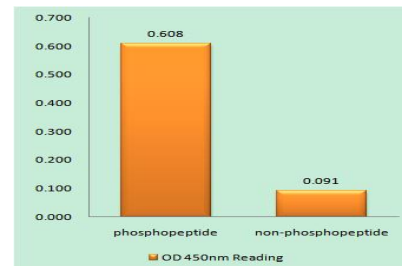
Storage&Stability:

Store at 4 °C short term. Aliquot and store at -20 °C long term. Avoid freeze-thaw cycles.

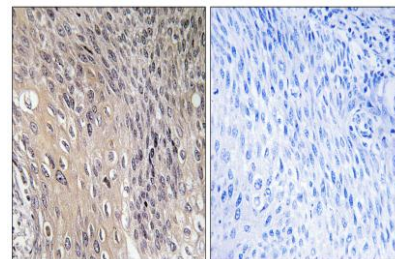
Specificity:

Phospho-Rho GDIα (S174) Polyclonal Antibody detects endogenous levels of Rho GDIα protein only when phosphorylated at S174.

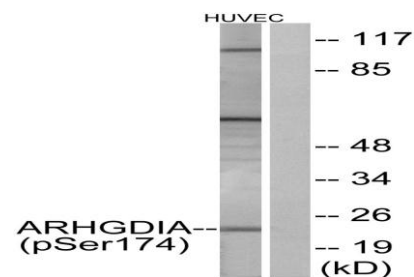
DATA:



Enzyme-Linked Immunosorbent Assay (Phospho-ELISA) for Immuno-gen Phosphopeptide (Phospho-left) and Non-Phosphopeptide (Phospho-right), using ARHGDI (Phospho-Ser174) Antibody



Immunohistochemistry analysis of paraffin-embedded human cervix carcinoma, using ARHGDI (Phospho-Ser174) Antibody. The picture on the right is blocked with the phospho peptide.



Western blot analysis of lysates from HUVEC cells treated with EGF 200ng/ml 30', using ARHGDI (Phospho-Ser174) Antibody. The lane on the right is blocked with the phospho peptide.

Note:

For research use only, not for use in diagnostic procedure.

Bioworld Technology, Inc.

Add: 1660 South Highway 100, Suite 500 St. Louis Park, MN 55416, USA.

Email: info@bioworld.com

Tel: 6123263284

Fax: 6122933841

Bioworld technology, co. Ltd.

Add: No 9, weidi road Qixia District Nanjing, 210046, P. R. China.

Email: info@biogot.com

Tel: 0086-025-68037686

Fax: 0086-025-68035151