

PLK1(Phospho-Thr210) polyclonal antibody

Catalog: BS65122

Host: Rabbit

Reactivity: Human, Mouse, Rat

Background:

polo like kinase 1 (PLK1) Homo sapiens The Ser/Thr protein kinase encoded by this gene belongs to the CDC5/Polo subfamily. It is highly expressed during mitosis and elevated levels are found in many different types of cancer. Depletion of this protein in cancer cells dramatically inhibited cell proliferation and induced apoptosis; hence, it is a target for cancer therapy. [provided by RefSeq, Sep 2015],

Product:

Liquid in PBS containing 50% glycerol, 0.5% BSA and 0.02% sodium azide.

Molecular Weight:

~ 70 kDa

Swiss-Prot:

P53350

Purification&Purity:

The antibody was affinity-purified from rabbit antiserum by affinity-chromatography using epitope-specific immunogen.

Applications:

WB 1:500-2000 ,Immunohistochemistry: 1/100 - 1/300. ELISA: 1/5000. Not yet tested in other applications.

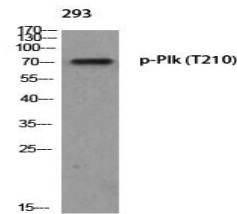
Storage&Stability:

Store at 4 °C short term. Aliquot and store at -20 °C long term. Avoid freeze-thaw cycles.

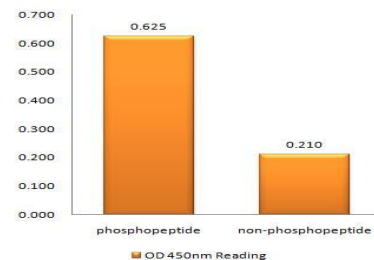
Specificity:

Phospho-Plk (T210) Polyclonal Antibody detects endogenous levels of Plk protein only when phosphorylated at T210.

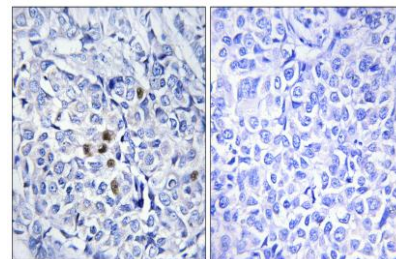
DATA:



Western blot analysis of 293 using p-Plk (T210) antibody.



Enzyme-Linked Immunosorbent Assay (Phospho-ELISA) for Immunogen Phosphopeptide (Phospho-left) and Non-Phosphopeptide (Phospho-right), using PLK1 (Phospho-Thr210) Antibody



Immunohistochemistry analysis of paraffin-embedded human breast carcinoma, using PLK1 (Phospho-Thr210) Antibody. The picture on the right is blocked with the phospho peptide.

Note:

For research use only, not for use in diagnostic procedure.

Bioworld Technology, Inc.

Add: 1660 South Highway 100, Suite 500 St. Louis Park, MN 55416, USA.

Email: info@bioworld.com

Tel: 6123263284

Fax: 6122933841

Bioworld technology, co. Ltd.

Add: No 9, weidi road Qixia District Nanjing, 210046, P. R. China.

Email: info@biogot.com

Tel: 0086-025-68037686

Fax: 0086-025-68035151