

## AKR1CL1 polyclonal antibody

Catalog: BS65114

Host: Rabbit

Reactivity: Human

**BackGround:**

similarity:Belongs to the aldo/keto reductase family.,

**Product:**

Liquid in PBS containing 50% glycerol, 0.5% BSA and 0.02% sodium azide.

**Molecular Weight:**

/

**Swiss-Prot:**

Q5T2L2

**Purification&Purity:**

The antibody was affinity-purified from rabbit antiserum by affinity-chromatography using epitope-specific immunogen.

**Applications:**

Immunofluorescence: 1/200 - 1/1000. ELISA: 1/40000. Not yet tested in other applications.

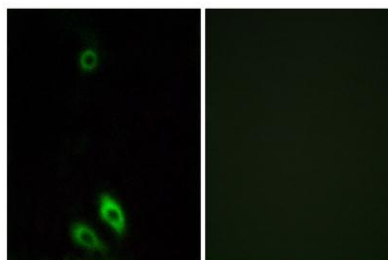
**Storage&Stability:**

Store at 4 °C short term. Aliquot and store at -20 °C long

term. Avoid freeze-thaw cycles.

**Specificity:**

AKR1CL1 Polyclonal Antibody detects endogenous levels of AKR1CL1 protein.

**DATA:**

Immunofluorescence analysis of A549 cells, using AKR1CL1 Antibody.

The picture on the right is blocked with the synthesized peptide.

**Note:**

For research use only, not for use in diagnostic procedure.

**Bioworld Technology, Inc.**

Add: 1660 South Highway 100, Suite 500 St. Louis Park, MN 55416, USA.

Email: [info@bioworld.com](mailto:info@bioworld.com)

Tel: 6123263284

Fax: 6122933841

**Bioworld technology, co. Ltd.**

Add: No 9, weidi road Qixia District Nanjing, 210046, P. R. China.

Email: [info@biogot.com](mailto:info@biogot.com)

Tel: 0086-025-68037686

Fax: 0086-025-68035151