

Bak polyclonal antibody

Catalog: BS6477

Host: Rabbit

Reactivity: Human,Rat

BackGround:

Bak or Bcl2 homologous antagonist is a member of the Bcl2 family of proteins. The Bcl-2 related proteins interact with one another through the formation of homo and heterodimers. The susceptibility of cells to apoptotic stimuli is thought to be controlled by the relative ratios of the different Bcl2 family proteins. Bak has been demonstrated to accelerate the rate of apoptosis in growth factor deprived murine lymphoid, neuronal and fibroblastic cell lines. This protein localizes to mitochondria, and functions to induce apoptosis. It interacts with and accelerates the opening of the mitochondrial voltage-dependent anion channel, which leads to a loss in membrane potential and the release of cytochrome c.

Product:

Rabbit IgG, 1mg/ml in PBS with 0.02% sodium azide, 50% glycerol, pH7.2

Molecular Weight:

~ 25 kDa

Swiss-Prot:

Q16611

Purification&Purity:

The antibody was affinity-purified from rabbit antiserum by affinity-chromatography using epitope-specific immunogen and the purity is > 95% (by SDS-PAGE).

Applications:

WB 1:500 - 1:2000

IHC 1:50 - 1:100

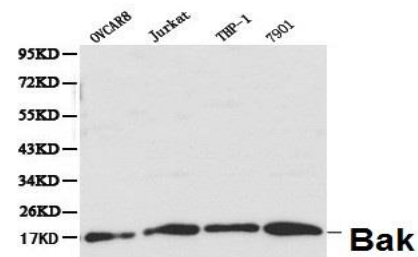
Storage&Stability:

Store at 4 °C short term. Aliquot and store at -20 °C long term. Avoid freeze-thaw cycles.

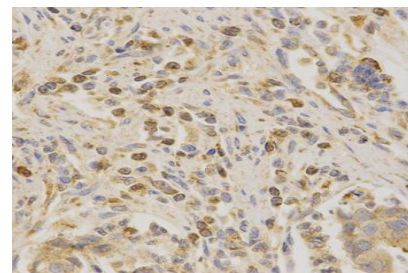
Specificity:

Bak polyclonal antibody detects endogenous levels of BAK1 protein.

DATA:



WesternBlot (WB) analysis of Bak polyclonal antibody in extracts from OVCAR8, Jurkat, THP1 and 7901 cells.



Immunohistochemistry (IHC) analysis of Bak pAb in paraffin-embedded Human Stomach Cancer tissue.

Note:

For research use only, not for use in diagnostic procedure.

Bioworld Technology, Inc.

Add: 1660 South Highway 100, Suite 500 St. Louis Park, MN 55416, USA.

Email: info@bioworld.com

Tel: 6123263284

Fax: 6122933841

Bioworld technology, co. Ltd.

Add: No 9, weidi road Qixia District Nanjing, 210046, P. R. China.

Email: info@biogot.com

Tel: 0086-025-68037686

Fax: 0086-025-68035151