

HP1 alpha (Phospho-S92) polyclonal antibody

Catalog: BS64568

Host: Rabbit

Reactivity: Human, Mouse, Rat

BackGround:

Heterochromatin protein 1 (HP1) is a family of heterochromatic adaptor molecules involved in both gene silencing and higher order chromatin structure. All three HP1 family members (α , β , and γ) are primarily associated with centromeric heterochromatin; however, HP1 β and γ also localize to euchromatic sites in the genome. HP1 proteins are approximately 25 kDa in size and contain a conserved amino-terminal chromodomain, followed by a variable hinge region and a conserved carboxy-terminal chromoshadow domain. The chromodomain facilitates binding to histone H3 tri-methylated at Lys9, a histone "mark" closely associated with centromeric heterochromatin.

Product:

Rabbit IgG, 1mg/ml in PBS with 0.02% sodium azide, 50% glycerol, pH7.2

Molecular Weight:

~ 25 kDa

Swiss-Prot:

P45973

Purification&Purity:

The antibody was affinity-purified from rabbit antiserum by affinity-chromatography using epitope-specific immunogen and the purity is > 95% (by SDS-PAGE).

Applications:

WB:1:500~1:1000 IHC:1:50~1:200

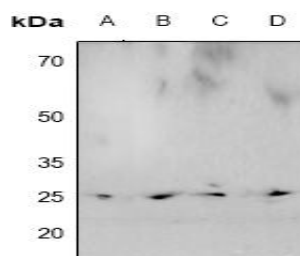
Storage&Stability:

Store at 4 °C short term. Aliquot and store at -20 °C long term. Avoid freeze-thaw cycles.

Specificity:

HP1 α (Phospho-S92) polyclonal antibody detects endogenous levels of HP1 α protein only when phosphorylated at Ser92.

DATA:



Western blot (WB) analysis of HP1 α (Phospho-S92) polyclonal antibody at 1:500 dilution

LaneA:PC3 whole cell lysate

LaneB:The Heart tissue lysate of Mouse

LaneC:The Brain tissue lysate of Mouse

LaneD:The Heart tissue lysate of Rat

Note:

For research use only, not for use in diagnostic procedure.

Bioworld Technology, Inc.

Add: 1660 South Highway 100, Suite 500 St. Louis Park, MN 55416, USA.

Email: info@bioworld.com

Tel: 6123263284

Fax: 6122933841

Bioworld technology, co. Ltd.

Add: No 9, weidi road Qixia District Nanjing, 210046, P. R. China.

Email: info@biogot.com

Tel: 0086-025-68037686

Fax: 0086-025-68035151