

## RXR alpha (Phospho-S260) polyclonal antibody

Catalog: BS64567

Host: Rabbit

Reactivity: Human,Mouse,Rat

### BackGround:

The human retinoid X receptors (RXRs) are encoded by three distinct genes (RXR $\alpha$ , RXR $\beta$ , and RXR $\gamma$ ) and bind selectively and with high affinity to the vitamin A derivative, 9-cis-retinoic acid. RXRs are type-II nuclear hormone receptors that are largely localized to the nuclear compartment independent of ligand binding. Nuclear RXRs form heterodimers with nuclear hormone receptor subfamily 1 proteins, including thyroid hormone receptor, retinoic acid receptors, vitamin D receptor, peroxisome proliferator-activated receptors, liver X receptors, and farnesoid X receptor. Since RXRs heterodimerize with multiple nuclear hormone receptors, they play a central role in transcriptional control of numerous hormonal signaling pathways by binding to cis-acting response elements in the promoter/enhancer region of target genes. Retinoid X receptor  $\alpha$  (RXR $\alpha$ ) is the founding RXR family member and is predominantly expressed in liver, kidney, epidermis, intestine and a variety of tissues. Knock-out of the murine rxra gene results in embryonic lethality tentatively due to myocardial hypoplasia, which demonstrates the importance of RXR $\alpha$  to retinoid signaling in vivo. Biochemical evidence suggests that RXR $\alpha$  transcriptional activity is post-translationally regulated through the Ras-Raf-MAPK signaling cascade. MAPK-dependent phosphorylation of RXR $\alpha$  directly abrogates the ability of RXR $\alpha$  to associate with nuclear receptor coactivators.

### Product:

Rabbit IgG, 1mg/ml in PBS with 0.02% sodium azide, 50% glycerol, pH7.2

### Molecular Weight:

~ 53 kDa

### Swiss-Prot:

P19793

### Purification&Purity:

The antibody was affinity-purified from rabbit antiserum by affinity-chromatography using epitope-specific immunogen and the purity is > 95% (by SDS-PAGE).

### Applications:

WB:1:500~1:1000

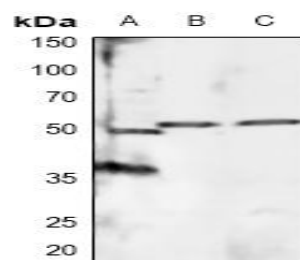
### Storage&Stability:

Store at 4 °C short term. Aliquot and store at -20 °C long term. Avoid freeze-thaw cycles.

### Specificity:

RXR  $\alpha$  (Phospho-S260) polyclonal antibody detects endogenous levels of RXR  $\alpha$  protein only when phosphorylated at Ser260.

### DATA:



Western blot (WB) analysis of RXR alpha (Phospho-S260) polyclonal antibody at 1:500 dilution

LaneA:Hela whole cell lysate

LaneB:The Brain tissue lysate of Mouse

LaneC:The Brain tissue lysate of Rat

### Note:

For research use only, not for use in diagnostic procedure.

### Bioworld Technology, Inc.

Add: 1660 South Highway 100, Suite 500 St. Louis Park, MN 55416,USA.

Email: [info@bioworld.com](mailto:info@bioworld.com)

Tel: 6123263284

Fax: 6122933841

### Bioworld technology, co. Ltd.

Add: No 9, weidi road Qixia District Nanjing, 210046, P. R. China.

Email: [info@biogot.com](mailto:info@biogot.com)

Tel: 0086-025-68037686

Fax: 0086-025-68035151