

RET (Phospho-Y981) polyclonal antibody

Catalog: BS64563

Host: Rabbit

Reactivity: Human,Mouse,Rat

BackGround:

The Ret gene products include two glycosylated proteins and, in tunicamycin treated cells, a non-glycosylated protein consistent with the predicted Ret molecular weight based on sequence analysis. Tumor-specific rearrangements of the Ret proto-oncogene have been identified in papillary thyroid carcinomas leading to the formation of different transforming fusion proteins sharing the tyrosine kinase domain of Ret. In contrast to the Ret proto-oncogene, the rearranged forms are constitutively phosphorylated on tyrosine and are translocated from the membrane to the cytoplasm.

Product:

Rabbit IgG, 1mg/ml in PBS with 0.02% sodium azide, 50% glycerol, pH7.2

Molecular Weight:

~ 175, 124 kDa

Swiss-Prot:

P07949

Purification&Purity:

The antibody was affinity-purified from rabbit antiserum by affinity-chromatography using epitope-specific immunogen and the purity is > 95% (by SDS-PAGE).

Applications:

WB:1:500~1:1000

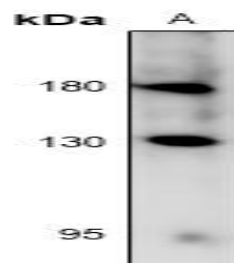
Storage&Stability:

Store at 4 °C short term. Aliquot and store at -20 °C long term. Avoid freeze-thaw cycles.

Specificity:

RET (Phospho-Y981) polyclonal antibody detects endogenous levels of RET protein only when phosphorylated at Tyr981.

DATA:



Western blot (WB) analysis of RET (Phospho-Y981) polyclonal antibody at 1:500 dilution

LaneA:A375 whole cell lysate

Note:

For research use only, not for use in diagnostic procedure.

Bioworld Technology, Inc.

Add: 1660 South Highway 100, Suite 500 St. Louis Park, MN 55416,USA.

Email: info@bioworld.com

Tel: 6123263284

Fax: 6122933841

Bioworld technology, co. Ltd.

Add: No 9, weidi road Qixia District Nanjing, 210046, P. R. China.

Email: info@biogot.com

Tel: 0086-025-68037686

Fax: 0086-025-68035151