

## Lamin A/C (Phospho-S392) polyclonal antibody

Catalog: BS64502

Host: Rabbit

Reactivity: Human, Mouse, Rat

### Background:

Lamin A and C are present in equal amounts in the lamina of mammals. Plays an important role in nuclear assembly, chromatin organization, nuclear membrane and telomere dynamics. Prelamin-A/C can accelerate smooth muscle cell senescence. It acts to disrupt mitosis and induce DNA damage in vascular smooth muscle cells (VSMCs), leading to mitotic failure, genomic instability, and premature senescence.

### Product:

Rabbit IgG, 1mg/ml in PBS with 0.02% sodium azide, 50% glycerol, pH7.2

### Size:

~ 74, 65 kDa

### Swiss-Prot:

P02545

### Purification&Purity:

The antibody was affinity-purified from rabbit antiserum by affinity-chromatography using epitope-specific immunogen and the purity is > 95% (by SDS-PAGE).

### Applications:

WB: 1:500~1:1000

IHC: 1:50~1:200

### Storage&Stability:

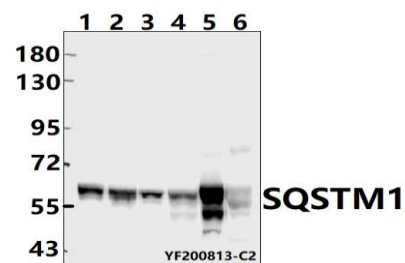
Store at 4 °C short term. Aliquot and store at -20 °C long

term. Avoid freeze-thaw cycles.

### Protein length:

Lamin A/C (Phospho-S392) polyclonal antibody detects endogenous levels of Lamin A/C protein only when phosphorylated at Ser392.

### DATA:



Western blot (WB) analysis of Lamin A/C (Phospho-S392) polyclonal antibody at 1:500 dilution

LaneA:DLD whole cell lysate

LaneB:The Kidney tissue lysate of Mouse

LaneC:The Lung tissue lysate of Rat

### Note:

For research use only, not for use in diagnostic procedure.

### Bioworld Technology, Inc.

Add: 1660 South Highway 100, Suite 500 St. Louis Park, MN 55416, USA.

Email: [info@bioworld.com](mailto:info@bioworld.com)

Tel: 6123263284

Fax: 6122933841

### Bioworld technology, co. Ltd.

Add: No 9, weidi road Qixia District Nanjing, 210046, P. R. China.

Email: [info@biogot.com](mailto:info@biogot.com)

Tel: 0086-025-68037686

Fax: 0086-025-68035151