

## TUBA1A (phospho-Y272) polyclonal antibody

Catalog: BS64386

Host: Rabbit

Reactivity: Human,Rat,Mouse

### BackGround:

Tubulin is a major cytoskeleton component that has five distinct forms, designated  $\alpha$ ,  $\beta$ ,  $\gamma$ ,  $\delta$  and  $\epsilon$  Tubulin.  $\alpha$  and  $\beta$  Tubulins form heterodimers which multimerize to form a microtubule filament. Multiple  $\beta$  Tubulin isoforms ( $\beta 1$ ,  $\beta 2$ ,  $\beta 3$ ,  $\beta 4$ ,  $\beta 5$ ,  $\beta 6$  and  $\beta 8$ ) have been characterized and are expressed in mammalian tissues.  $\beta 1$  and  $\beta 4$  are present throughout the cytosol,  $\beta 2$  is present in the nuclei and nucleoplasm, and  $\beta 3$  is a neuron-specific cytoskeletal protein.  $\gamma$  Tubulin forms the gammasome, which is required for nucleating microtubule filaments at the centrosome. Both  $\delta$  Tubulin and  $\epsilon$  Tubulin are associated with the centrosome.  $\delta$  Tubulin is a homolog of the Chlamydomonas  $\delta$  Tubulin Uni3 and is found in association with the centrioles, whereas  $\epsilon$  Tubulin localizes to the pericentriolar material.  $\epsilon$  Tubulin exhibits a cell-cycle-specific pattern of localization, first associating with only the older of the centrosomes in a newly duplicated pair and later associating with both centrosomes.

### Product:

1 mg/ml in Phosphate buffered saline (PBS) with 0.05% sodium azide, approx. pH 7.3.

### Molecular Weight:

~ 55 kDa

### Swiss-Prot:

Q71U36; P68363; Q9BQE3; Q6PEY2; P68366

### Purification&Purity:

The antibody was affinity-purified from rabbit antiserum by affinity-chromatography using epitope-specific immunogen and the purity is > 95% (by SDS-PAGE).

### Applications:

WB: 1:500~1:1000

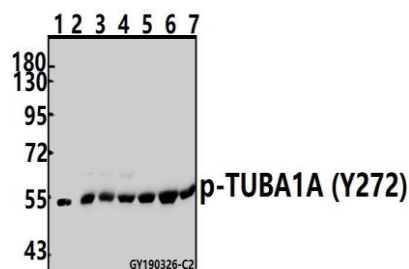
### Storage&Stability:

Store at 4 °C short term. Aliquot and store at -20 °C long term. Avoid freeze-thaw cycles.

### Specificity:

TUBA1A (phospho-Y272) polyclonal antibody detects endogenous levels of TUBA1A protein only when phosphorylated at Try272 .

### DATA:



Western blot (WB) analysis of TUBA1A (phospho-Y272) polyclonal antibody at 1:500 dilution

Lane1:U-87MG whole cell lysate(40ug)

Lane2:A375 whole cell lysate(40ug)

Lane3:HeLa whole cell lysate(40ug)

Lane4:A2780 whole cell lysate(40ug)

Lane5:EC9706 whole cell lysate(40ug)

Lane6:C6 whole cell lysate(40ug)

Lane7:CT26 whole cell lysate(40ug)

### Note:

For research use only, not for use in diagnostic procedure.

### Bioworld Technology, Inc.

Add: 1660 South Highway 100, Suite 500 St. Louis Park, MN 55416, USA.

Email: [info@bioworld.com](mailto:info@bioworld.com)

Tel: 6123263284

Fax: 6122933841

### Bioworld technology, co. Ltd.

Add: No 9, weidi road Qixia District Nanjing, 210046, P. R. China.

Email: [info@biogot.com](mailto:info@biogot.com)

Tel: 0086-025-68037686

Fax: 0086-025-68035151