

RAF1 (phospho-S289) polyclonal antibody

Catalog: BS64329

Host: Rabbit

Reactivity: Human, Mouse

BackGround:

Raf-1 is an ubiquitously expressed cytoplasmic protein with intrinsic serine/ threonine kinase activity. Raf-1, or c-Raf, is the cellular homolog of v-Raf, the product of the transforming gene of the 3611 strain of murine sarcoma virus. The unregulated kinase activity of the v-Raf protein is associated with cellular transformation and mitogenesis. Raf-1 is normally suppressed by its regulatory N-terminal domain. Raf-1 is activated in response to a variety of tyrosine kinase receptors as well as in response to pp60v-Src expression. Specifically, Raf-1 is phosphorylated in the catalytic domain at Ser 338 and, to a lesser extent, Ser 339. This phosphorylation requires the co-activation of PI 3-kinase and the Ras signaling pathway. Raf-1 is also phosphorylated on Tyr 340 and 341, which induces the phosphorylation of MEK. Phosphorylation of Ser 621 is essential for the catalytic activity of Raf-1 and downregulation by c-AMP-dependent protein kinase A (PKA). PKA also phosphorylates Raf-1 on Ser 43 and Ser 259. PKA phosphorylation of Ser 259 inhibits Raf-1 and decreases the phosphorylation necessary for Raf-1 activation at Ser 338.

Product:

1 mg/ml in Phosphate buffered saline (PBS) with 0.05% sodium azide, approx. pH 7.3.

Molecular Weight:

~ 75 kDa

Swiss-Prot:

P04049

Purification&Purity:

The antibody was affinity-purified from rabbit antiserum by affinity-chromatography using epitope-specific im-

munogen and the purity is > 95% (by SDS-PAGE).

Applications:

WB: 1:500~1:1000

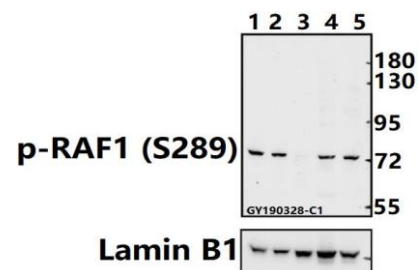
Storage&Stability:

Store at 4 °C short term. Aliquot and store at -20 °C long term. Avoid freeze-thaw cycles.

Specificity:

RAF1 (phospho-S289) polyclonal antibody detects endogenous levels of RAF1 protein only when phosphorylated at Ser289 .

DATA:



Western blot (WB) analysis of RAF1 (phospho-S289) polyclonal antibody at 1:500 dilution

Lane1: AML-12 whole cell lysate(40ug)

Lane2: CT26 whole cell lysate(40ug)

Lane3: PC12 whole cell lysate(40ug)

Lane4: HEK293T whole cell lysate(40ug)

Lane5: A549 whole cell lysate(40ug)

Note:

For research use only, not for use in diagnostic procedure.

Bioworld Technology, Inc.

Add: 1660 South Highway 100, Suite 500 St. Louis Park, MN 55416, USA.

Email: info@bioworld.com

Tel: 6123263284

Fax: 6122933841

Bioworld technology, co. Ltd.

Add: No 9, weidi road Qixia District Nanjing, 210046, P. R. China.

Email: info@biogot.com

Tel: 0086-025-68037686

Fax: 0086-025-68035151