

Smooth Muscle Actin polyclonal antibody

Catalog: BS62610

Host: Rabbit

Reactivity: Human,Rat,Mouse

BackGround:

Actin proteins are major components of the eukaryotic cytoskeleton. At least six vertebrate actin isoforms have been identified. The cytoplasmic β - and γ -actin proteins are referred to as “non-muscle” actin proteins as they are predominantly expressed in non-muscle cells where they control cell structure and motility. The α -cardiac and α -skeletal actin proteins are expressed in striated cardiac and skeletal muscles, respectively. The smooth muscle α -actin and γ -actin proteins are found primarily in vascular smooth muscle and enteric smooth muscle, respectively. The α -smooth muscle actin (ACTA2) is also known as aortic smooth muscle actin. These actin isoforms regulate the contractile potential of muscle cells.

Product:

Rabbit IgG, 1mg/ml in PBS with 0.02% sodium azide, 50% glycerol, pH7.4.

Molecular Weight:

~ 43 kDa

Swiss-Prot:

P62736

Purification&Purity:

The antibody was affinity-purified from rabbit antiserum by affinity-chromatography using epitope-specific immunogen and the purity is > 95% (by SDS-PAGE).

Applications:

WB: 1:500~1:1000

IHC:1:50~1:100

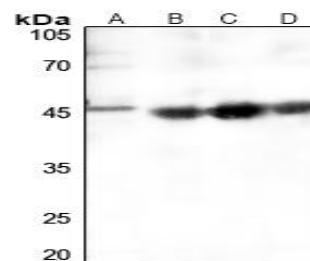
Storage&Stability:

Store at 4 °C short term. Aliquot and store at -20 °C long term. Avoid freeze-thaw cycles.

Specificity:

Smooth Muscle Actin polyclonal antibody detects endogenous levels of Smooth Muscle Actin protein.

DATA:



Western blot (WB) analysis of Smooth Muscle Actin polyclonal antibody at 1:500 dilution

LaneA:HEK293T whole cell lysate(40ug)

LaneB:Hela whole cell lysate(40ug)

LaneC:A2780 whole cell lysate(40ug)

LaneD:The mouse spleen lysate of Mouse(40ug)

Note:

For research use only, not for use in diagnostic procedure.

Bioworld Technology, Inc.

Add: 1660 South Highway 100, Suite 500 St. Louis Park, MN 55416, USA.

Email: info@bioworld.com

Tel: 6123263284

Fax: 6122933841

Bioworld technology, co. Ltd.

Add: No 9, weidi road Qixia District Nanjing, 210046, P. R. China.

Email: info@biogot.com

Tel: 0086-025-68037686

Fax: 0086-025-68035151