

Tensin 1 (Phospho-Y1326) polyclonal antibody

Catalog: BS62609

Host: Rabbit

Reactivity: Human,Rat,Mouse

BackGround:

The protein encoded by this gene localizes to focal adhesions, regions of the plasma membrane where the cell attaches to the extracellular matrix. This protein crosslinks actin filaments and contains a Src homology 2 (SH2) domain, which is often found in molecules involved in signal transduction. This protein is a substrate of calpain II. Alternative splicing results in multiple transcript variants encoding different isoforms.

Product:

Rabbit IgG, 1mg/ml in PBS with 0.02% sodium azide, 50% glycerol, pH7.4.

Molecular Weight:

~ 200 kDa

Swiss-Prot:

Q9HBL0

Purification&Purity:

The antibody was affinity-purified from rabbit antiserum by affinity-chromatography using epitope-specific immunogen and the purity is > 95% (by SDS-PAGE).

Applications:

WB: 1:500~1:1000

Storage&Stability:

Store at 4 °C short term. Aliquot and store at -20 °C long

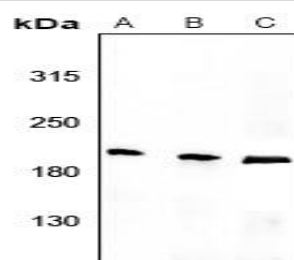
term. Avoid freeze-thaw cycles.

Specificity:

Tensin 1 (Phospho-Y1326) polyclonal antibody detects endogenous levels of Tensin

1 protein only when phosphorylated at Tyr1326.

DATA:



Western blot (WB) analysis of Tensin 1 (Phospho-Y1326) polyclonal antibody at 1:500 dilution

LaneA:MEF whole cell lysate(40ug)

LaneB:PC12 whole cell lysate(40ug)

LaneC:LOVO whole cell lysate(40ug)

Note:

For research use only, not for use in diagnostic procedure.

Bioworld Technology, Inc.

Add: 1660 South Highway 100, Suite 500 St. Louis Park, MN 55416, USA.

Email: info@bioworld.com

Tel: 6123263284

Fax: 6122933841

Bioworld technology, co. Ltd.

Add: No 9, weidi road Qixia District Nanjing, 210046, P. R. China.

Email: info@biogot.com

Tel: 0086-025-68037686

Fax: 0086-025-68035151