

ZKSCAN4 polyclonal antibody

Catalog: BS62600

Host: Rabbit

Reactivity: Human, Mouse

BackGround:

May be involved in the transcriptional activation of MDM2 and EP300 genes. PTM: Phosphorylated upon DNA damage, probably by ATM or ATR. Belongs to the krueppel C2H2-type zinc-finger protein family. Contains 1 KRAB domain. Contains 1 SCAN box domain. Contains 7 C2H2-type zinc fingers. tissue specificity: Expressed in adult heart, brain, placenta, lung and kidney, but not in adult liver and skeletal muscle. In 17-day old embryo, detected in liver, skeletal muscle, brain, heart and small intestine.

Product:

Rabbit IgG, 1mg/ml in PBS with 0.02% sodium azide, 50% glycerol, pH7.4.

Molecular Weight:

~ 65 kDa

Swiss-Prot:

Q969J2

Purification&Purity:

The antibody was affinity-purified from rabbit antiserum by affinity-chromatography using epitope-specific immunogen and the purity is > 95% (by SDS-PAGE).

Applications:

WB: 1:500~1:1000

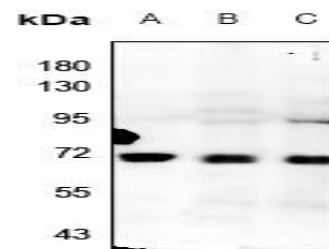
IHC: 1:50~1:100

Storage&Stability:

Store at 4 °C short term. Aliquot and store at -20 °C long term. Avoid freeze-thaw cycles.

Specificity:

ZKSCAN4 polyclonal antibody detects endogenous levels of ZKSCAN4 protein.

DATA:

Western blot (WB) analysis of ZKSCAN4 polyclonal antibody at 1:500 dilution

LaneA: MEF whole cell lysate(40ug)

LaneB: PC12 whole cell lysate(40ug)

LaneC: A549 whole cell lysate(40ug)

Note:

For research use only, not for use in diagnostic procedure.

Bioworld Technology, Inc.

Add: 1660 South Highway 100, Suite 500 St. Louis Park, MN 55416, USA.

Email: info@bioworld.com

Tel: 6123263284

Fax: 6122933841

Bioworld technology, co. Ltd.

Add: No 9, weidi road Qixia District Nanjing, 210046, P. R. China.

Email: info@biogot.com

Tel: 0086-025-68037686

Fax: 0086-025-68035151