

## GPR174 polyclonal antibody

Catalog: BS62574

Host: Rabbit

Reactivity: Human,Mouse,Rat

### BackGround:

G protein-coupled receptors (GPRs), also known as seven transmembrane receptors, heptahelical receptors or 7TM receptors, comprise a superfamily of proteins that play a role in many different stimulus-response pathways. G protein coupled receptors translate extracellular signals into intracellular signals (G protein activation) and they respond to a variety of signaling molecules, such as hormones and neurotransmitters. GPR174 (G protein-coupled receptor 174), also known as FKSG79, is a 333 amino acid multi-pass membrane protein that belongs to the G-protein coupled receptor 1 family and is thought to function as a receptor for G protein-coupled purines.

### Product:

Rabbit IgG, 1mg/ml in PBS with 0.02% sodium azide, 50% glycerol, pH7.2

### Molecular Weight:

~ 39 kDa

### Swiss-Prot:

Q9BXC1

### Purification&Purity:

The antibody was affinity-purified from rabbit antiserum by affinity-chromatography using epitope-specific immunogen and the purity is > 95% (by SDS-PAGE).

### Applications:

WB:1:500~1:1000 IF:1:50~1:200

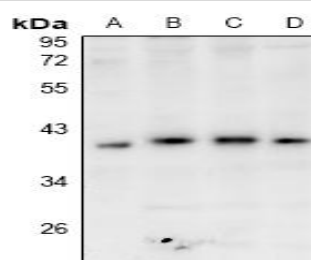
### Storage&Stability:

Store at 4 °C short term. Aliquot and store at -20 °C long term. Avoid freeze-thaw cycles.

### Specificity:

GPR174 polyclonal antibody detects endogenous levels of GPR174 protein.

### DATA:



Western blot (WB) analysis of GPR174 polyclonal antibody at 1:500 dilution

LaneA:BV2 whole cell lysate

LaneB:PC12 whole cell lysate

LaneC:A549 whole cell lysate

LaneD:Hela whole cell lysate

### Note:

For research use only, not for use in diagnostic procedure.

### Bioworld Technology, Inc.

Add: 1660 South Highway 100, Suite 500 St. Louis Park, MN 55416,USA.

Email: [info@bioworld.com](mailto:info@bioworld.com)

Tel: 6123263284

Fax: 6122933841

### Bioworld technology, co. Ltd.

Add: No 9, weidi road Qixia District Nanjing, 210046, P. R. China.

Email: [info@biogot.com](mailto:info@biogot.com)

Tel: 0086-025-68037686

Fax: 0086-025-68035151