

GPR173 polyclonal antibody

Catalog: BS62573

Host: Rabbit

Reactivity: Human,Mouse,Rat

BackGround:

G protein-coupled receptors (GPRs or GPCRs), are members of the largest protein family and play a role in many different stimulus-response pathways. G-protein coupled receptors mediate extracellular signals into intracellular signals (G-protein activation). They respond to a great variety of signaling molecules, including hormones, neurotransmitters and other proteins and peptides. GPR173 is also known as super conserved receptor expressed in brain 3 (SREB3). It is an orphan receptor that is expressed primarily in brain and ovary tissues.

Product:

Rabbit IgG, 1mg/ml in PBS with 0.02% sodium azide, 50% glycerol, pH7.2

Molecular Weight:

~ 41 kDa

Swiss-Prot:

Q9NS66

Purification&Purity:

The antibody was affinity-purified from rabbit antiserum by affinity-chromatography using epitope-specific immunogen and the purity is > 95% (by SDS-PAGE).

Applications:

WB:1:500~1:1000 IF:1:50~1:200

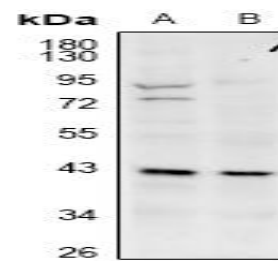
Storage&Stability:

Store at 4 °C short term. Aliquot and store at -20 °C long term. Avoid freeze-thaw cycles.

Specificity:

GPR173 polyclonal antibody detects endogenous levels of GPR173 protein.

DATA:



Western blot (WB) analysis of GPR173 polyclonal antibody at 1:500 dilution

LaneA:CT26 whole cell lysate

LaneB:C6 whole cell lysate

Note:

For research use only, not for use in diagnostic procedure.

Bioworld Technology, Inc.

Add: 1660 South Highway 100, Suite 500 St. Louis Park, MN 55416,USA.

Email: info@bioworld.com

Tel: 6123263284

Fax: 6122933841

Bioworld technology, co. Ltd.

Add: No 9, weidi road Qixia District Nanjing, 210046, P. R. China.

Email: info@biogot.com

Tel: 0086-025-68037686

Fax: 0086-025-68035151