

GPR158 polyclonal antibody

Catalog: BS62572

Host: Rabbit

Reactivity: Human,Mouse,Rat

BackGround:

G-protein coupled receptor 158 (GPR158) is a receptor belonging to the Class C GPCR family. It lacks the extracellular Venus flytrap module characteristic of the known members of that family and instead contains two other elements that are not typical of the class: a calcium-binding EGF-like domain and a leucine repeat region. The mature extracellular domain of human GPR158 contains 393 amino acids (aa) and shares 89% identity with both mouse and rat GPR158. GPR158 is expressed at the highest level in the brain, but also in a variety of other tissues including retina, spleen, liver and lung. GPR158 was originally identified in functional screens linked with biological stress and has been implicated in the osteocalcin effect on cognitive processes in the brain, and glaucoma and cancer in the periphery.

Product:

Rabbit IgG, 1mg/ml in PBS with 0.02% sodium azide, 50% glycerol, pH7.2

Molecular Weight:

~ 150 kDa

Swiss-Prot:

Q5T848

Purification&Purity:

The antibody was affinity-purified from rabbit antiserum by affinity-chromatography using epitope-specific immunogen and the purity is > 95% (by SDS-PAGE).

Applications:

WB:1:500~1:1000 IHC:1:50~1:200 IF:1:50~1:200

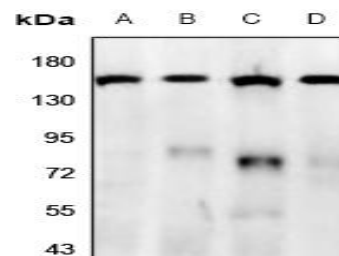
Storage&Stability:

Store at 4 °C short term. Aliquot and store at -20 °C long term. Avoid freeze-thaw cycles.

Specificity:

GPR158 polyclonal antibody detects endogenous levels of GPR158 protein.

DATA:



Western blot (WB) analysis of GPR158 polyclonal antibody at 1:500 dilution

LaneA:BV2 whole cell lysate

LaneB:PMVEC whole cell lysate

LaneC:A549 whole cell lysate

LaneD:HepG2 whole cell lysate

Note:

For research use only, not for use in diagnostic procedure.

Bioworld Technology, Inc.

Add: 1660 South Highway 100, Suite 500 St. Louis Park, MN 55416,USA.

Email: info@bioworld.com

Tel: 6123263284

Fax: 6122933841

Bioworld technology, co. Ltd.

Add: No 9, weidi road Qixia District Nanjing, 210046, P. R. China.

Email: info@biogot.com

Tel: 0086-025-68037686

Fax: 0086-025-68035151