

## Cathepsin C HC polyclonal antibody

Catalog: BS62562

Host: Rabbit

Reactivity: Human,Rat

### BackGround:

Cathepsin C, known also as dipeptidyl aminopeptidase I (DPPI), is a tetrameric lysosomal cysteine peptidase belonging to the papain family. Cathepsin C is involved in intracellular protein degradation and the processing of protein precursors, where it participates in cell growth, neuraminidase activation, and platelet factor XIII activation. Cathepsin C is largely related to other lysosomal cysteine proteinases, including cathepsin B, H and L. Enzymatically, Cathepsin C is capable of sequentially removing dipeptides from the amino terminus, and it requires halide ions, namely chloride ions, and thiols for complete enzymatic activity. Protein levels of Cathepsin C are detected in a variety of tissues, and it is most highly expressed in spleen, kidney, cytotoxic lymphocytes and myeloid cells, where it localizes to the secretory granule compartment. Cathepsin C is initially synthesized as a proenzyme that is rapidly processed to generate two distinct chains that function together as the mature form of the enzyme.

### Product:

Rabbit IgG, 1mg/ml in PBS with 0.02% sodium azide, 50% glycerol, pH7.2

### Molecular Weight:

~ 52 kDa

### Swiss-Prot:

P53634

### Purification&Purity:

The antibody was affinity-purified from rabbit antiserum

by affinity-chromatography using epitope-specific immunogen and the purity is > 95% (by SDS-PAGE).

### Applications:

WB:1:500~1:1000

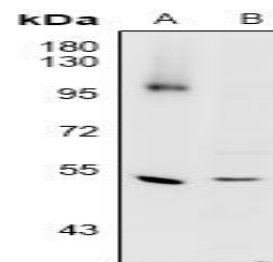
### Storage&Stability:

Store at 4 °C short term. Aliquot and store at -20 °C long term. Avoid freeze-thaw cycles.

### Specificity:

Cathepsin C HC polyclonal antibody detects endogenous levels of Cathepsin C HC protein.

### DATA:



Western blot (WB) analysis of Cathepsin C HC polyclonal antibody at 1:500 dilution

LaneA:H9C2 whole cell lysate

LaneB:PC3 whole cell lysate

### Note:

For research use only, not for use in diagnostic procedure.

### Bioworld Technology, Inc.

Add: 1660 South Highway 100, Suite 500 St. Louis Park, MN 55416, USA.

Email: [info@bioworld.com](mailto:info@bioworld.com)

Tel: 6123263284

Fax: 6122933841

### Bioworld technology, co. Ltd.

Add: No 9, weidi road Qixia District Nanjing, 210046, P. R. China.

Email: [info@biogot.com](mailto:info@biogot.com)

Tel: 0086-025-68037686

Fax: 0086-025-68035151