

SRPK3 polyclonal antibody

Catalog: BS62473

Host: Rabbit

Reactivity: Human,Rat,Mouse

BackGround:

Arginine/serine-rich (RS) domain-containing proteins and their phosphorylation by specific protein kinases constitute control circuits to regulate both constitutive and alternative pre-mRNA splicing and coordinate splicing with transcription in cells. Two SR protein-specific kinases (SRPK, also designated SFRSK), SRPK1 and SRPK2, are highly specific for the phosphorylation of these RS proteins, thereby contributing to splicing regulation. SRPK1 plays a role in the condensation of sperm chromatin. SRPK2 has a stringent preference for SR dipeptides and contains a proline-rich sequence at its amino terminus. Both SRPK1 and SRPK2 are highly expressed in testes. SRPK1 is found exclusively in pancreas and SRPK2 is found exclusively in brain and lung. SRPK3 is expressed in the heart and in skeletal muscle.

Product:

Rabbit IgG, 1mg/ml in PBS with 0.02% sodium azide, 50% glycerol, pH7.4.

Molecular Weight:

~ 59 kDa

Swiss-Prot:

Q9UPE1

Purification&Purity:

The protein was purified from E.coli and the purity is > 95% (by SDS-PAGE).

Applications:

WB:1:500~1:1000

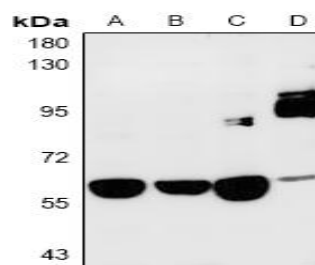
Storage&Stability:

Store at 4 °C short term. Aliquot and store at -25 °C long term. Avoid freeze-thaw cycles.

Specificity:

SRPK3 polyclonal antibody detects endogenous levels of SRPK3 protein.

DATA:



Western blot (WB) analysis of SRPK3 polyclonal antibody at 1:500 dilution

LaneA:PC3 whole cell lysate

LaneB:H1792 whole cell lysate

LaneC:PC12 whole cell lysate

LaneD:The heart tissue lysate of Mouse

Note:

For research use only, not for use in diagnostic procedure.

Bioworld Technology, Inc.

Add: 1660 South Highway 100, Suite 500 St. Louis Park, MN 55416,USA.

Email: info@bioworld.com

Tel: 6123263284

Fax: 6122933841

Bioworld technology, co. Ltd.

Add: No 9, weidi road Qixia District Nanjing, 210046, P. R. China.

Email: info@biogot.com

Tel: 0086-025-68037686

Fax: 0086-025-68035151