



## EOS polyclonal antibody

Catalog: BS62469

Host: Rabbit

Reactivity: Human,Rat,Mouse

**BackGround:**

Serine protease 33, serine protease that has amidolytic activity, cleaving its substrates before Arg residues.

**Product:**

Rabbit IgG, 1mg/ml in PBS with 0.02% sodium azide, 50% glycerol, pH7.4.

**Molecular Weight:**

~ 33 kDa

**Swiss-Prot:**

Q8NF86

**Purification&Purity:**

The protein was purified from E.coli and the purity is > 95% (by SDS-PAGE).

**Applications:**

WB:1:500~1:1000 IHC:1:50~1:200

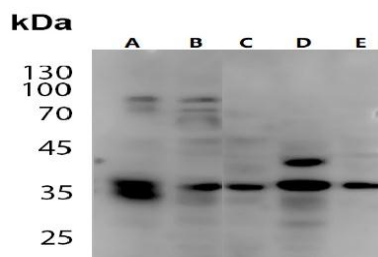
**Storage&Stability:**

Store at 4 °C short term. Aliquot and store at -25 °C long term. Avoid freeze-thaw cycles.

**Specificity:**

EOS polyclonal antibody detects endogenous levels of

EOS protein.

**DATA:**

Western blot (WB) analysis of EOS polyclonal antibody at 1:500 dilution

LaneA:Jurkat whole cell lysate

LaneB:HGC27 whole cell lysate

LaneC:The brain tissue lysate of Mouse

LaneD:The spleen tissue lysate of Rat

LaneE:The brain tissue lysate of Rat

**Note:**

For research use only, not for use in diagnostic procedure.

**Bioworld Technology, Inc.**

Add: 1660 South Highway 100, Suite 500 St. Louis Park, MN 55416,USA.

Email: [info@bioworld.com](mailto:info@bioworld.com)

Tel: 6123263284

Fax: 6122933841

**Bioworld technology, co. Ltd.**

Add: No 9, weidi road Qixia District Nanjing, 210046, P. R. China.

Email: [info@biogol.com](mailto:info@biogol.com)

Tel: 0086-025-68037686

Fax: 0086-025-68035151