

PHAX polyclonal antibody

Catalog: BS62467

Host: Rabbit

Reactivity: Human,Rat,Mouse

BackGround:

Phosphorylated adapter RNA export protein, a phospho-protein adapter involved in the XPO1-mediated U snRNA export from the nucleus. Bridge components required for U snRNA export, the cap binding complex (CBC)-bound snRNA on the one hand and the GTPase Ran in its active GTP-bound form together with the export receptor XPO1 on the other. Its phosphorylation in the nucleus is required for U snRNA export complex assembly and export, while its dephosphorylation in the cytoplasm causes export complex disassembly. It is recycled back to the nucleus via the importin alpha/beta heterodimeric import receptor. The directionality of nuclear export is thought to be conferred by an asymmetric distribution of the GTP- and GDP-bound forms of Ran between the cytoplasm and nucleus. Its compartmentalized phosphorylation cycle may also contribute to the directionality of export. Binds strongly to m7G-capped U1 and U5 small nuclear RNAs (snRNAs) in a sequence-unspecific manner and phosphorylation-independent manner. Plays also a role in the biogenesis of U3 small nucleolar RNA (snoRNA). Involved in the U3 snoRNA transport from nucleoplasm to Cajal bodies. Binds strongly to m7G-capped U3, U8 and U13 precursor snoRNAs and weakly to trimethylated (TMG)-capped U3, U8 and U13 snoRNAs. Binds also to telomerase RNA.

Product:

Rabbit IgG, 1mg/ml in PBS with 0.02% sodium azide, 50% glycerol, pH7.4.

Molecular Weight:

~ 55 kDa

Swiss-Prot:

Q9H814

Purification&Purity:

The protein was purified from E.coli and the purity is > 95% (by SDS-PAGE).

Applications:

WB:1:500~1:1000 ICC:1:50~1:200

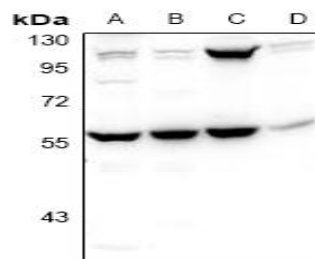
Storage&Stability:

Store at 4 °C short term. Aliquot and store at -25 °C long term. Avoid freeze-thaw cycles.

Specificity:

PHAX polyclonal antibody detects endogenous levels of PHAX protein.

DATA:



Western blot (WB) analysis of PHAX polyclonal antibody at 1:500 dilution

LaneA:L02 whole cell lysate

LaneB:MCF-7 whole cell lysate

LaneC:SP2/0 whole cell lysate

LaneD:H9C2 whole cell lysate

Note:

For research use only, not for use in diagnostic procedure.

Bioworld Technology, Inc.

Add: 1660 South Highway 100, Suite 500 St. Louis Park, MN 55416,USA.

Email: info@bioworld.com

Tel: 6123263284

Fax: 6122933841

Bioworld technology, co. Ltd.

Add: No 9, weidi road Qixia District Nanjing, 210046, P. R. China.

Email: info@biogot.com

Tel: 0086-025-68037686

Fax: 0086-025-68035151