

RCL1 polyclonal antibody

Catalog: BS62465

Host: Rabbit

Reactivity: Human, Mouse

BackGround:

RNA 3'-terminal phosphate cyclase-like protein, does not have cyclase activity. Plays a role in 40S-ribosomal-subunit biogenesis in the early pre-rRNA processing steps at sites A0, A1 and A2 that are required for proper maturation of the 18S RNA.

Product:

Rabbit IgG, 1mg/ml in PBS with 0.02% sodium azide, 50% glycerol, pH7.4.

Molecular Weight:

~ 41 kDa

Swiss-Prot:

Q9Y2P8

Purification&Purity:

The protein was purified from E.coli and the purity is > 95% (by SDS-PAGE).

Applications:

WB:1:500~1:1000

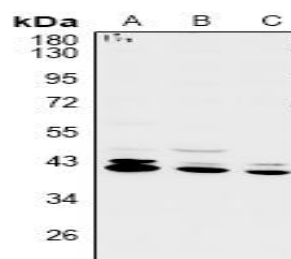
Storage&Stability:

Store at 4 °C short term. Aliquot and store at -25 °C long term. Avoid freeze-thaw cycles.

Specificity:

RCL1 polyclonal antibody detects endogenous levels of RCL1 protein.

DATA:



Western blot (WB) analysis of RCL1 polyclonal antibody at 1:500 dilution

LaneA:L02 whole cell lysate

LaneB:A549 whole cell lysate

LaneC:COS-7 whole cell lysate

Note:

For research use only, not for use in diagnostic procedure.

Bioworld Technology, Inc.

Add: 1660 South Highway 100, Suite 500 St. Louis Park, MN 55416, USA.

Email: info@bioworld.com

Tel: 6123263284

Fax: 6122933841

Bioworld technology, co. Ltd.

Add: No 9, weidi road Qixia District Nanjing, 210046, P. R. China.

Email: info@biogol.com

Tel: 0086-025-68037686

Fax: 0086-025-68035151