

RIMKLA polyclonal antibody

Catalog: BS62462

Host: Rabbit

Reactivity: Human,Rat,Mouse

BackGround:

N-acetylaspartylglutamate synthase A, catalyzes the synthesis of N-acetyl-L-aspartyl-L-glutamate (NAAG) and N-acetyl-L-aspartyl-L-glutamyl-L-glutamate.

Product:

Rabbit IgG, 1mg/ml in PBS with 0.02% sodium azide, 50% glycerol, pH7.4.

Molecular Weight:

~ 50 kDa

Swiss-Prot:

Q8IXN7

Purification&Purity:

The protein was purified from E.coli and the purity is > 95% (by SDS-PAGE).

Applications:

WB:1:500~1:1000

Storage&Stability:

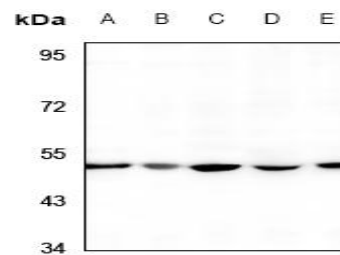
Store at 4 °C short term. Aliquot and store at -25 °C long term. Avoid freeze-thaw cycles.

Specificity:

RIMKLA polyclonal antibody detects endogenous levels

of RIMKLA protein.

DATA:



Western blot (WB) analysis of RIMKLA polyclonal antibody at 1:500 dilution

LaneA:Aml-12 whole cell lysate

LaneB:PC12 whole cell lysate

LaneC:L02 whole cell lysate

LaneD:A549 whole cell lysate

LaneE:COS-7 whole cell lysate

Note:

For research use only, not for use in diagnostic procedure.

Bioworld Technology, Inc.

Add: 1660 South Highway 100, Suite 500 St. Louis Park, MN 55416,USA.

Email: info@bioworld.com

Tel: 6123263284

Fax: 6122933841

Bioworld technology, co. Ltd.

Add: No 9, weidi road Qixia District Nanjing, 210046, P. R. China.

Email: info@biogot.com

Tel: 0086-025-68037686

Fax: 0086-025-68035151