

## S100-Z polyclonal antibody

Catalog: BS62442

Host: Rabbit

Reactivity: Human

**BackGround:**

Protein S100-Z, this protein binds two calcium ions.

**Product:**

Rabbit IgG, 1mg/ml in PBS with 0.02% sodium azide, 50% glycerol, pH7.4.

**Molecular Weight:**

~ 12 kDa

**Swiss-Prot:**

Q8WXG8

**Purification&Purity:**

The protein was purified from E.coli and the purity is > 95% (by SDS-PAGE).

**Applications:**

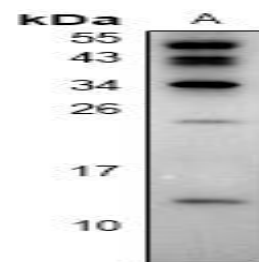
WB:1:500~1:1000 IHC:1:50~1:200

**Storage&Stability:**

Store at 4 °C short term. Aliquot and store at -25 °C long term. Avoid freeze-thaw cycles.

**Specificity:**

S100-Z polyclonal antibody detects endogenous levels of S100-Z protein.

**DATA:**

Western blot (WB) analysis of S100-Z polyclonal antibody at 1:500 dilution

LaneA:K562 whole cell lysate

**Note:**

For research use only, not for use in diagnostic procedure.

**Bioworld Technology, Inc.**

Add: 1660 South Highway 100, Suite 500 St. Louis Park, MN 55416, USA.

Email: [info@bioworld.com](mailto:info@bioworld.com)

Tel: 6123263284

Fax: 6122933841

**Bioworld technology, co. Ltd.**

Add: No 9, weidi road Qixia District Nanjing, 210046, P. R. China.

Email: [info@biogot.com](mailto:info@biogot.com)

Tel: 0086-025-68037686

Fax: 0086-025-68035151