

Vinculin polyclonal antibody

Catalog: BS62273

Host: Rabbit

Reactivity: Human,Mouse,Rat

BackGround:

Vinculin is a cytoskeletal protein that plays an important role in the regulation of focal adhesions and embryonic development. Three structural vinculin domains include an amino-terminal head, a short, flexible proline-rich region and a carboxy-terminal tail. In the inactive state, the head and tail domains of vinculin interact to form a closed conformation. The open and active form of vinculin translocates to focal adhesions where it is thought to be involved in anchoring F-actin to the membrane and regulation of cell migration. Phospholipid binding to the tail domain and subsequent phosphorylation of vinculin at Ser1033 and Ser1045 by PKC- α and Tyr100 and Tyr1065 by Src kinases weakens the head-tail interaction. This change in vinculin allows the binding of a number of other proteins, including talin, α -actinin and paxillin, which disrupts the head-tail interaction and initiates the conformational change from the inactive to active state. Vinculin deficiencies are associated with a decrease in cell adhesion and an increase in cell motility, suggesting a possible role in metastatic growth. This is supported by a demonstrated relationship between decreased vinculin expression and increased carcinogenesis and metastasis in colorectal carcinoma.

Product:

Rabbit IgG, 1mg/ml in PBS with 0.02% sodium azide, 50% glycerol, pH7.2

Molecular Weight:

~ 130 kDa

Swiss-Prot:

P18206

Purification&Purity:

The antibody was affinity-purified from rabbit antiserum by affinity-chromatography using epitope-specific immunogen and the purity is > 95% (by SDS-PAGE).

Applications:

WB:1:500~1:1000

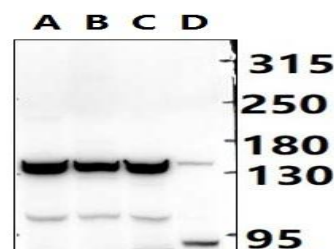
Storage&Stability:

Store at 4 °C short term. Aliquot and store at -20 °C long term. Avoid freeze-thaw cycles.

Specificity:

Vinculin polyclonal antibody detects endogenous levels of Vinculin protein.

DATA:



Western blot (WB) analysis of Vinculin polyclonal antibody at 1:500 dilution

LaneA:Hela whole cell lysate

LaneB:HepG2 whole cell lysate

LaneC:PC12 whole cell lysate

LaneD:The Muscle tissue lysate of Mouse

Note:

For research use only, not for use in diagnostic procedure.

Bioworld Technology, Inc.

Add: 1660 South Highway 100, Suite 500 St. Louis Park, MN 55416,USA.

Email: info@bioworld.com

Tel: 6123263284

Fax: 6122933841

Bioworld technology, co. Ltd.

Add: No 9, weidi road Qixia District Nanjing, 210046, P. R. China.

Email: info@biogot.com

Tel: 0086-025-68037686

Fax: 0086-025-68035151