

CTBP1 polyclonal antibody

Catalog: BS62260

Host: Rabbit

Reactivity: Human,Mouse,Rat

BackGround:

CtBP1 is a cellular phosphoprotein that associates with various proteins and functions as a corepressor of transcription. CtBP1 and the related protein CtBP2 are characterized as C-terminal binding protein of adenovirus E1A, and they preferentially associate with the E1A via a 5-amino acid motif, PLDLS, to repress E1A induced oncogenesis and cellular transformation. CtBP1 is expressed from embryo to adult, but CtBP2 is mainly expressed during embryogenesis. During skeletal and T-cell development, CtBP1 and CtBP2 associate with the PLDLSL domain of δ EF1, a cellular zinc finger-homeodomain protein, and thereby enhances δ EF1 induced transcriptional silencing. In addition, CtBP complexes with CtIP, a protein that recognizes distinctly different protein motifs from CtBP. CtIP binds to the BRCT repeats within the breast cancer gene BRCA1 and enables CtBP to influence BRCA1 activity. CtIP/CtBP binding to BRCA1 inhibits the transactivation of the p21 promoter, and it is critical for regulating p21 transcription in response to DNA damage.

Product:

Rabbit IgG, 1mg/ml in PBS with 0.02% sodium azide, 50% glycerol, pH7.2

Molecular Weight:

~ 48 kDa

Swiss-Prot:

Q13363

Purification&Purity:

The antibody was affinity-purified from rabbit antiserum by affinity-chromatography using epitope-specific immunogen and the purity is > 95% (by SDS-PAGE).

Applications:

WB:1:500~1:1000 IHC:1:50~1:200 IF:1:50~1:200

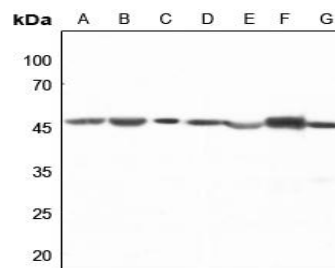
Storage&Stability:

Store at 4 °C short term. Aliquot and store at -20 °C long term. Avoid freeze-thaw cycles.

Specificity:

CTBP1 polyclonal antibody detects endogenous levels of CTBP1 protein.

DATA:



Western blot (WB) analysis of CTBP1 polyclonal antibody at 1:500 dilution

LaneA:HEK293T whole cell lysate

LaneB:Hela whole cell lysate

LaneC:H1688 whole cell lysate

LaneD:The Lung tissue lysate of Mouse

LaneE:The Kidney tissue lysate of Mouse

LaneF:The Lung tissue lysate of Rat

LaneG:The Kidney tissue lysate of Rat

Note:

For research use only, not for use in diagnostic procedure.

Bioworld Technology, Inc.

Add: 1660 South Highway 100, Suite 500 St. Louis Park, MN 55416,USA.

Email: info@bioworld.com

Tel: 6123263284

Fax: 6122933841

Bioworld technology, co. Ltd.

Add: No 9, weidi road Qixia District Nanjing, 210046, P. R. China.

Email: info@biogot.com

Tel: 0086-025-68037686

Fax: 0086-025-68035151