

PPID polyclonal antibody

Catalog: BS62063

Host: Rabbit

Reactivity: Human,Rat,Mouse

BackGround:

The protein encoded by this gene is a member of the peptidyl-prolyl cis-trans isomerase (PPIase) family. PPIases catalyze the cis-trans isomerization of proline imidic peptide bonds in oligopeptides and accelerate the folding of proteins. This protein has been shown to possess PPIase activity and, similar to other family members, can bind to the immunosuppressant cyclosporin A.

Product:

1 mg/ml in Phosphate buffered saline (PBS) with 0.05% sodium azide, approx. pH 7.3.

Molecular Weight:

~ 40 kDa

Swiss-Prot:

Q08752

Purification&Purity:

The antibody was affinity-purified from rabbit antiserum by affinity-chromatography using epitope-specific immunogen and the purity is > 95% (by SDS-PAGE).

Applications:

WB: 1:500~1:1000

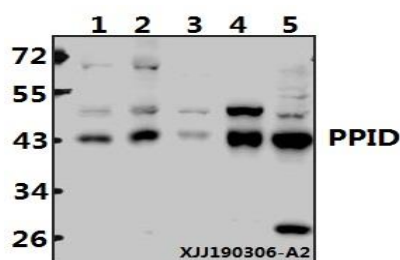
Storage&Stability:

Store at 4 °C short term. Aliquot and store at -20 °C long term. Avoid freeze-thaw cycles.

Specificity:

PPID polyclonal antibody detects endogenous levels of PPID protein.

DATA:



Western blot (WB) analysis of PPID polyclonal antibody at 1:500 dilution

Lane1:MCF-7 whole cell lysate(40 µg)

Lane2:HEK293T whole cell lysate(40 µg)

Lane3:U-87MG whole cell lysate(40 µg)

Lane4:The Brain tissue lysate of Mouse(20ug)

Lane5:PC12 whole cell lysate(40 µg)

Note:

For research use only, not for use in diagnostic procedure.

Bioworld Technology, Inc.

Add: 1660 South Highway 100, Suite 500 St. Louis Park, MN 55416, USA.

Email: info@bioworld.com

Tel: 6123263284

Fax: 6122933841

Bioworld technology, co. Ltd.

Add: No 9, weidi road Qixia District Nanjing, 210046, P. R. China.

Email: info@biogot.com

Tel: 0086-025-68037686

Fax: 0086-025-68035151