

PDE6G polyclonal antibody

Catalog: BS61981

Host: Rabbit

Reactivity: Rat, Mouse

BackGround:

Phosphodiesterases (PDEs, also designated cyclic nucleotide phosphodiesterases) are important for the downregulation of the intracellular level of the second messenger cyclic adenosine monophosphate (cAMP), as they are responsible for hydrolyzing cAMP to 5'AMP. PDE6G, also designated phosphodiesterase 6G cGMP-specific rod γ , is an oligomer composed of two catalytic chains (α and β), an inhibitory chain (γ) and an δ chain. PDE6G functions in the processes of transmission and amplification of the visual signal. A mutation in the rod PDE- γ gene desensitizes and delays murine rod photoreceptors. PDE6H, also designated phosphodiesterase 6H cGMP-specific cone γ , is a tetramer composed of two catalytic chains (α and β) and two inhibitory chains (γ). It functions similarly to PDE6H in vision processes. Defects of the PDE6H gene cause retinal cone dystrophy 3 (rcd3), also designated cone dystrophy with night blindness and supernormal rod responses.

Product:

1 mg/ml in Phosphate buffered saline (PBS) with 0.05% sodium azide, approx. pH 7.3.

Molecular Weight:

~ 10 kDa

Swiss-Prot:

P18545

Purification&Purity:

The antibody was affinity-purified from rabbit antiserum by affinity-chromatography using epitope-specific immunogen and the purity is > 95% (by SDS-PAGE).

Applications:

WB: 1:500~1:1000

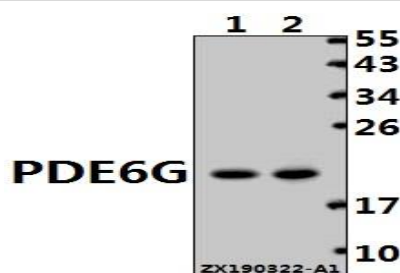
Storage&Stability:

Store at 4 °C short term. Aliquot and store at -20 °C long term. Avoid freeze-thaw cycles.

Specificity:

PDE6G polyclonal antibody detects endogenous levels of PDE6G protein.

DATA:



Western blot (WB) analysis of PDE6G polyclonal antibody at 1:500 dilution

Lane1: The Eye tissue lysate of Mouse (40ug)

Lane2: The Eye tissue lysate of Rat (30ug)

Note:

For research use only, not for use in diagnostic procedure.

Bioworld Technology, Inc.

Add: 1660 South Highway 100, Suite 500 St. Louis Park, MN 55416, USA.

Email: info@bioworld.com

Tel: 6123263284

Fax: 6122933841

Bioworld technology, co. Ltd.

Add: No 9, weidi road Qixia District Nanjing, 210046, P. R. China.

Email: info@biogot.com

Tel: 0086-025-68037686

Fax: 0086-025-68035151