

RGS14 polyclonal antibody

Catalog: BS61912

Host: Rabbit

Reactivity: Human

BackGround:

RGS domains bind directly to activated Ga subunits and act as GTPase-activating proteins (GAPs) to attenuate and/or modulate hormone and neurotransmitter receptor-initiated signaling by both Ga-GTP and Gbg. RGS proteins shorten the lifetime of the activated G protein. Western blot analysis shows strong expression of RGS14 as a primarily cytosolic protein restricted to brain and spleen. It is suggested that RGS14 may constitute a bridging molecule that allows cross-regulation of signaling pathways downstream from G protein-coupled receptors.

Product:

Rabbit IgG, 1mg/ml in PBS with 0.02% sodium azide, 50% glycerol, pH7.2

Molecular Weight:

~ 61 kDa

Swiss-Prot:

O43566

Purification&Purity:

The antibody was affinity-purified from rabbit antiserum by affinity-chromatography using epitope-specific immunogen and the purity is > 95% (by SDS-PAGE).

Applications:

IHC: 1:50~1:200

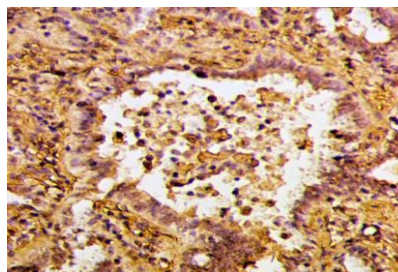
Storage&Stability:

Store at 4 °C short term. Aliquot and store at -20 °C long term. Avoid freeze-thaw cycles.

Specificity:

RGS14 polyclonal antibody detects endogenous levels of RGS14 protein.

DATA:



Immunohistochemistry (IHC) analyzes of RGS14 polyclonal antibody in paraffin-embedded human liver cancer tissue at 1:50.

Note:

For research use only, not for use in diagnostic procedure.

Bioworld Technology, Inc.

Add: 1660 South Highway 100, Suite 500 St. Louis Park, MN 55416, USA.

Email: info@bioworld.com

Tel: 6123263284

Fax: 6122933841

Bioworld technology, co. Ltd.

Add: No 9, weidi road Qixia District Nanjing, 210046, P. R. China.

Email: info@biogot.com

Tel: 0086-025-68037686

Fax: 0086-025-68035151